

# XANTÉ

# X-36<sup>TM</sup>

## UV PRINTER



*Prints up to 24"x36"!*



***PRINT ON VIRTUALLY ANY MEDIA!***  
**CMYK + WWW**

***UP TO 2880 DPI RESOLUTION***

***PRINT ON MEDIA UP TO 6 INCHES TALL***

***DUAL LED LAMPS***  
**(Instant Ink Curing)**



251.473.6502

***xante.com***

# BEST. EVER.

The X- 36 UV Printer cannot be beat.

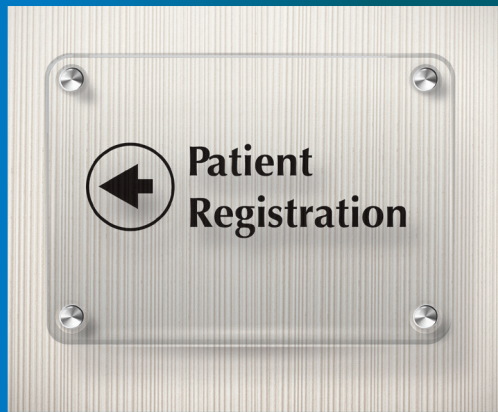
Large flatbed printers designed for signage and graphics print at high speeds, but are limited by substrate thickness.

Small format printers designed for specialty items print at slower speeds and are limited by substrate length and width.

The Xanté family of X-UV Printers do **BOTH**. It's the best of both worlds.



Signage ■ Manufacturing ■ Specialty Items ■ Industrial ■ Packaging



CONTACT US TODAY FOR MORE INFORMATION.

**251.473.6502**



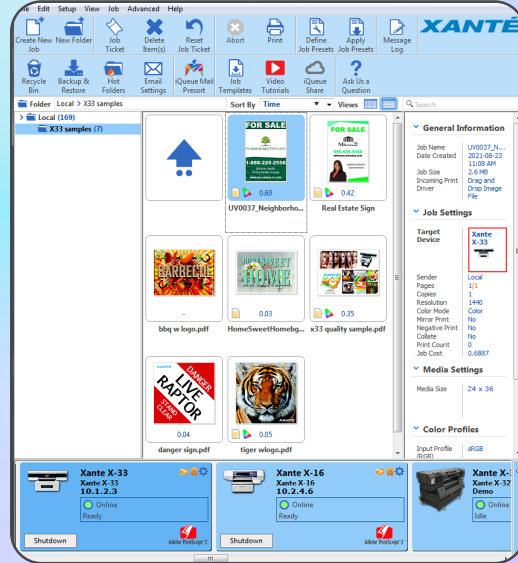
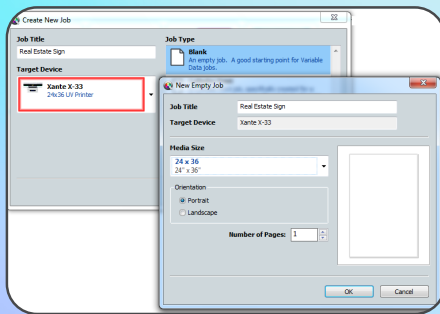
Simply Brilliant Color Workflow

**INCLUDED!**

**Welcome to iQueue Prepress Software**

Xante builds on its innovative workflow software with powerful team-based productivity in iQueue 14. True server-client operation enhances your workflow to optimize the talents and time of everyone involved in production. Take advantage of your entire team of IT

Create a new job or simply drag and drop your file into the queue.



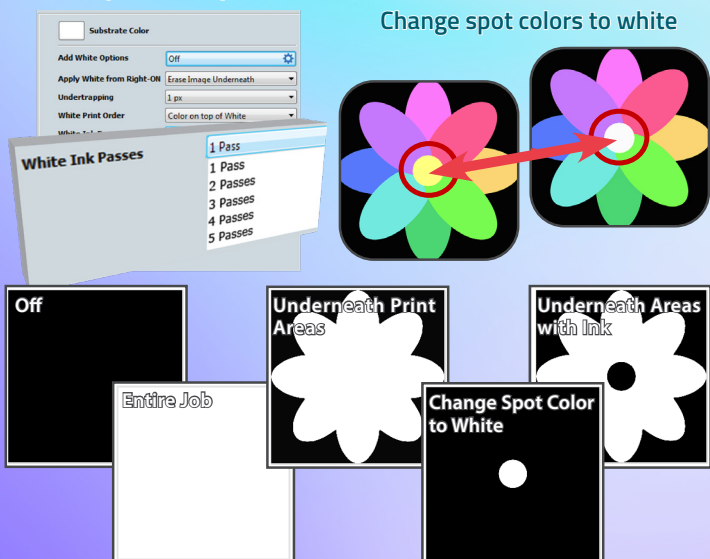
**iQueue features include:**

- Independent CMYK Density Controls
- PANTONE® Color Library
- Right-ON® Spot Color Matching
- QR Code Generator
- Full Imposition and Tiling
- PDF-Out AND SO MUCH MORE!

specialists, designers, and printer operators to simplify prepress tasks such as job sharing and job cost estimating, file editing tools, patented Right-ON® Spot Color Matching and much more. Create attention-grabbing displays with VividHD-UV ink. And, with instant curing, your customers will appreciate the fast, durable results.

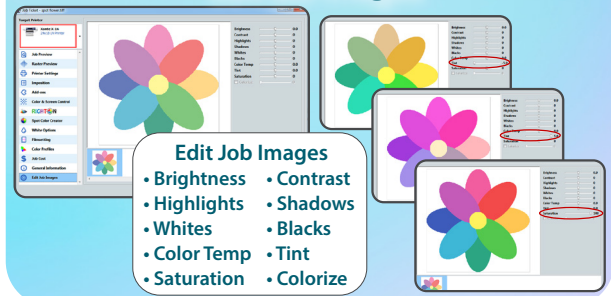
**White Options**

Build depth with layers of white



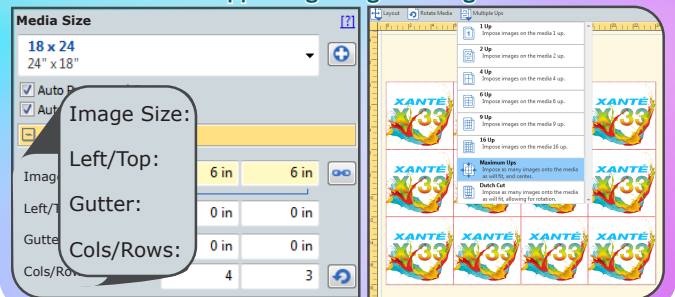
Change spot colors to white

**Edit Job Images**



- Edit Job Images**
- Brightness
  - Contrast
  - Highlights
  - Shadows
  - Whites
  - Blacks
  - Color Temp
  - Tint
  - Saturation
  - Colorize

Imposition allows you to optimize your page layout by placing images in the maximum number of columns and rows while also supporting margins and gutters.





## SPECIFICATIONS

### PRINTING CAPABILITIES

Imaging area:	36" x 24" (91.4cm x 60.9cm)
Max. media size:	36" x 24" (91.4cm x 60.9cm)
Min. media size:	.5" x .5"
Max. print height:	6" ( 15.24 cm)
Media transport:	41.3" x 24" (104.9cm x 60.9cm) Vacuum bed
Print colors:	CMYK + WWWW
Resolution:	720/1080/1440/2160/2880 DPI Resolutions
UV lamp:	Dual LED, 385-415 nM, low heat curing lamps

### INK AND MEDIA

Ink type:	UV, 500 mL bottles per color The maximum shelf life is 1 (one) year from Date of Manufacture (DoM). Once opened, the shelf life is 2 (two) months or 1 (one) year from DoM, whichever comes first.
Media types:	PVC plastic, styrene, wood, aluminum, metal, acrylics, coroplast, ceramics, fabric, leather, composites, paperboard, foamboard, glass, carpet, tile and more

### PRINTER CONNECTIVITY

1-Gigabit Ethernet

### PREPRESS SOFTWARE

Xanté iQueue Workflow:	Adobe® PostScript® 3™, Independent CMYK Density Control, Spot Color Matching, Imposition, Digital File Editing, Variable Printing, and much more
------------------------	--

### WEIGHTS, DIMENSIONS

Dimensions:	58"L x 63"W x 24"H (147 x 160 x 60cm)
Net/Gross weight:	398.2 lbs (181kg)
Power supply:	110v or 220v 50-60hz

### WORKING CONDITION

Operating temperature:	22-26 °C (68 °F - 78 °F)
Relative humidity:	50-80RH



#### iQueue Simply Brilliant Workflow (Included)

Digital Color Workflow with Advanced Color Matching and File Management Tools

# XANTÉ

251.473.6502

[xante.com](http://xante.com)



## Adobe® PostScript® 3™