

Wide Format UV LED Flatbed Printer

**RICOH**  
imagine. change.

# RICOH Pro TF6251



Pro TF6251

up to  
1,251.8  
ft./hour full colour



# Drive profit with an expansive variety of applications.

Enlarge your client base with affordable productivity, whether you're a commercial, enterprise or franchise printer.

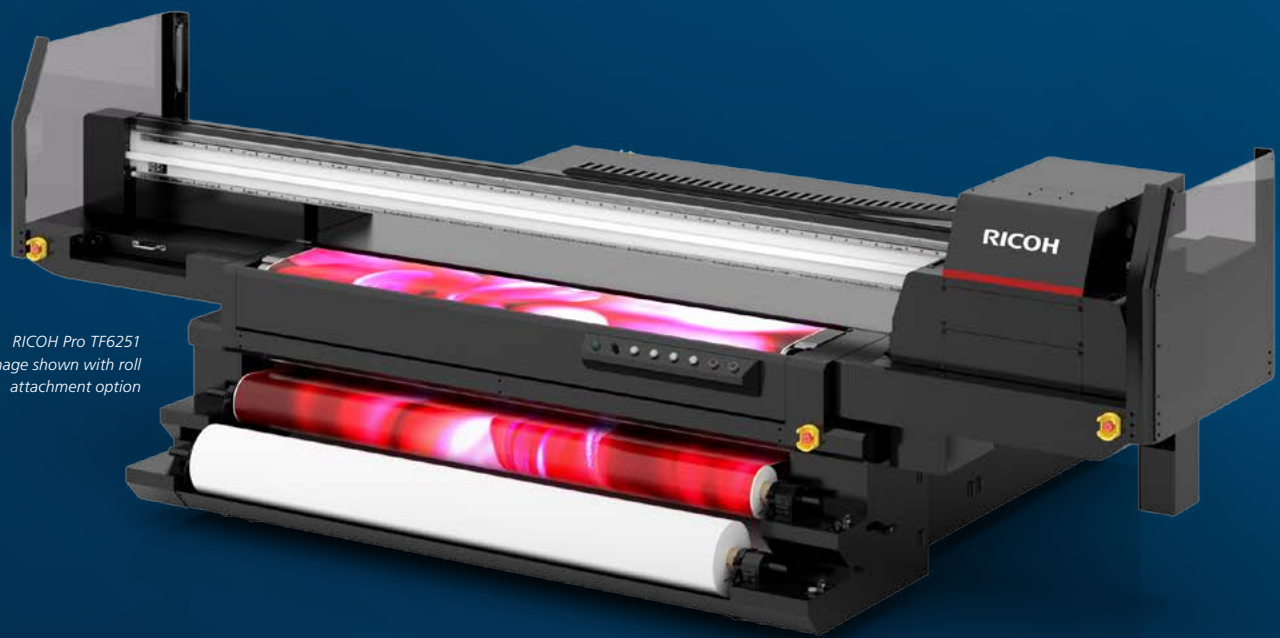
The RICOH Pro TF6251 Wide Format UV LED flatbed printer makes it easy to digitally produce the widest range of applications on rigid substrates up to 4.3" thick. With the new roll attachment option, you can also expand into flexible media — while maintaining spot-on colour consistency across substrates.

Save resources and stay on schedule with superior colour accuracy that prevents costly reprints. Featuring Ricoh's industrial printheads, this system delivers outstanding image quality and productivity.

- Gain media capabilities and grow revenue streams without increasing footprint
- Expect reliable performance, day in and day out, with automated daily maintenance and simple, low-cost operations
- Offer faster service with print speeds up to 1,251.8 ft<sup>2</sup>/hr in four-colour draft mode and 522 ft<sup>2</sup>/hr in four-colour standard mode
- Serve graphic-intensive markets with exceptional image quality up to 635 × 1800 dpi, enhanced by Ricoh innovations like variable-drop technology and industrial printheads
- Extend your product list with support for rigid substrates up to 98.4" wide and for flexible substrates (with the roll option) up to 86.2" wide
- Master the system quickly and experience ease of use with a new Ricoh-designed user interface, and intuitive controls
- Customize the system to your needs with a choice of two ink configurations (CMYK + White, Clear & Primer or CMYK + Dual White) and two ink options (RICOH Pro UV GP120 or RICOH Pro UV DG130)
- Meet growing requirements for eco-friendly products with Ricoh's GREENGUARD-certified UV LED inks

# Media versatility that creates opportunity.

Enter new markets, grow print volumes and satisfy more of your customers' needs with the ability to produce consistent colour and stunning graphics across many types of media.



RICOH Pro TF6251  
Image shown with roll attachment option



## Thick and Thin

Expand your applications with support for rigid substrates up to a remarkable 4.3" thick.



## Rigid and Flexible

Add the roll option to print on both rigid and flexible media on one device, ensuring colour consistency and maximizing application capabilities.



## UV LED Curing

Create more products with the ability to print on thinner substrates like styrene and other heat-sensitive medias. Instant on/off means the printer is ready when you are.



## Irregular Shapes

Four independent vacuum zones support irregular, odd-shaped or multi-piece media, greatly reducing the need for premasking.

# Help clients stand out with innovative shapes, sizes and materials.

Add a finishing solution to create an even larger assortment of unique, high-value products — with a full portfolio of products and services, Ricoh can help you create a complete end-to-end process.



Indoor and outdoor signage



Backlit displays



POP displays



Art reproductions

# Unleash your **creativity.**

The RICOH Pro TF6251 Wide Format UV LED flatbed printer supports the media you count on. A maximum printing area accommodates 4' x 8' sheets with full-bleed printing.

PVC

Acrylic

Foamcore

Coroplast

Gatorboard/Styrene

Wood

Aluminum

Corrugated

Plastics

Fluted polypropylene

Mesh banners

Canvas

Wallpaper

Vinyl

and more



**Events and exhibitions**



**Promotional items**



**Décor**



**Short-run specialty packaging**

# Make an impact with high-quality, long-lasting prints.

Configure the RICOH Pro TF6251 to meet your colour and workflow priorities.

## CONFIGURATIONS



**CMYK + White, Clear & Primer**  
Get the most substrate versatility and control over image output.



**CMYK + Dual White**  
Achieve industry-leading productivity on white-ink intensive work.

## INK OPTIONS

**NEW RICOH Pro UV GP120 Ink**  
Choose Ricoh's newest ink option for a superior colour gamut that lets you hit more hues.

**RICOH Pro UV DG130 Ink**  
Print accurate colours on a large variety of substrates with advanced ink adhesion and a wide colour gamut.

\*GP120 Ink required when using the RICOH Pro TF6251 roll option.



# Smart production. **Superior output.**



## **Outstanding image quality**

- Produce impeccable graphics with 12 printheads containing 1,280 nozzles each, for a total of 15,360 nozzles
- See smooth gradations, greyscale printing and crisp text thanks to Ricoh's variable drop technology, MH54XX Series industrial printheads and proprietary masking pattern
- Deliver superb detail to your brand-conscious and visually focused clients with up to 635 × 1800 dpi resolution
- Produce consistent output with the ionizer, eliminating static and ensuring optimal jetting accuracy



## **The productivity for demanding turnarounds**

- Meet tight deadlines and take on more work with speeds up to 1,251.8 ft<sup>2</sup>/hr. in four-colour draft mode and 522 ft<sup>2</sup>/hr. in four-colour standard mode
- Accelerate operations with LED curing that cures output immediately, allowing you to go right to finishing and installation
- Satisfy last-minute client requests by eliminating mounting and trimming steps with the ability to print directly on substrates, including edge-to-edge



## **Smart features that simplify operations and save money**

- Be more hands-off and boost uptime with automated daily printhead-carriage maintenance
- Perform multi-dpi printing and make tiling, scaling, cropping and other tasks easier with user-friendly ColorGATE PS20 Select
- Count on reliable performance year after year with durable steel industrial printheads
- Easily produce outstanding results on multi-layered and textured substrates with precise height-detection registration that ensures ink is dropped from the optimal distance

## **Maximize Your ROI** with Ricoh Sign & Graphics Professional Services.

Capture more opportunities and maximize the efficiency of every job, regardless of the mix of brands on your shop floor. From developing your expertise in substrates and special effects to conferring certifications in colour management and installation, our team can help you fine-tune your workflows to take your business to the next level.

### **Ricoh Wide Format Elite Access**

Give your business an added advantage with a direct channel to top wide-format experts. Industry veterans provide guidance on complex production challenges, collaborate with you on workflow questions and share in-depth knowledge across all areas of sign & graphics production.

# RICOH Pro TF6251

## SYSTEM SPECIFICATIONS

### General

Type	True Flatbed	
Print Method	UV LED	
Head Type	MH5421	
Number of Printheads	12	
Max Resolution	635 x 1800	
Ink	CMYW Clear & Primer	
Ink Configuration	Standard, Dual White	
Curing Method	LED	
Ink Bottle Capacity	CMYK and Clear 1 L for each White GP120: 900 ml, DG130: 850 ml Primer 1 L	
Ink Tank Capacity of Machine	2.5 L per colour	
Media Types	Rigid materials: acrylic petg, pc, pvc, glass, aluminium, steel, wood, mdf and more Roll materials: pvc, pet, banner, polyester and more	
Max Image Size (WxD)	Rigid materials: 98.4" x 51.2" (2,500 x 1,300 mm) Roll materials: Width 86.2" (2,190 mm)	
Media	Max Size	Rigid materials: 98.8" x 51.6" (2,510 x 1,310 mm) Roll materials: Width 86.6" (2,200 mm), length 984 ft (300 m)
	Thickness	Rigid materials: 4.3" (110 mm) Roll materials: 0.1 mm - 0.432 mm (110 µm - 432 µm)
	Weight	Rigid materials: 9.2lbs/ft <sup>2</sup> (45 kg/m <sup>2</sup> ) Roll materials: 0.1 mm - 0.432 mm (110 µm - 432 µm)
	Roll Option	Available
Interface	USB 3.0	
Compatible RIPS	ColorGATE, SAI Flexi, ONYX & Caldera	
Dimensions	Width	189.4" (4,812 mm) Roll Option installed: 189.4" (4,812 mm)
	Depth	86.6" (2,200 mm) Roll Option installed: 110.9" (2,817 mm)
	Height	62.2" (1,580 mm) Roll Option installed: 62.2" (1,580 mm)
Weight	Less than 3,637 lbs (1,650 kg) Roll Option installed: Less than 4,850 lbs (2,200 kg)	
Vacuum Area	4 Vacuum Zones	
Power Supply	North America: AC208-240V 3P/N/PE, 30A, 60Hz	

### Print Speed

Mode	RICOH Pro UV Ink Bottle GP120		RICOH Pro UV Ink Bottle DG130		
	Flatbed	Roll Option	Flatbed		
Standard	4C	Draft	1,251.8 ft <sup>2</sup> /hr.	721.2 ft <sup>2</sup> /hr.	1,251.8 ft <sup>2</sup> /hr.
		Production	690 ft <sup>2</sup> /hr.	468.2 ft <sup>2</sup> /hr.	690 ft <sup>2</sup> /hr.
		Standard	522 ft <sup>2</sup> /hr.	376.7 ft <sup>2</sup> /hr.	522 ft <sup>2</sup> /hr.
	4C+W	Quality	345.5 ft <sup>2</sup> /hr.	269.1 ft <sup>2</sup> /hr.	345.5 ft <sup>2</sup> /hr.
		High Quality	172.2 ft <sup>2</sup> /hr.	145.3 ft <sup>2</sup> /hr.	172.2 ft <sup>2</sup> /hr.
		Draft	NA	NA	NA
Dual White	4C	Production	329.4 ft <sup>2</sup> /hr.	258.3 ft <sup>2</sup> /hr.	329.4 ft <sup>2</sup> /hr.
		Standard	163.6 ft <sup>2</sup> /hr.	139.9 ft <sup>2</sup> /hr.	163.6 ft <sup>2</sup> /hr.
		Quality	108.7 ft <sup>2</sup> /hr.	91.5 ft <sup>2</sup> /hr.	108.7 ft <sup>2</sup> /hr.
	4C+W	High Quality	71 ft <sup>2</sup> /hr.	59.2 ft <sup>2</sup> /hr.	71 ft <sup>2</sup> /hr.
		Draft	NA	NA	NA
		Production	431.6 ft <sup>2</sup> /hr.	328.3 ft <sup>2</sup> /hr.	431.6 ft <sup>2</sup> /hr.
	4C	Standard	216.4 ft <sup>2</sup> /hr.	183 ft <sup>2</sup> /hr.	216.4 ft <sup>2</sup> /hr.
		Quality	145.3 ft <sup>2</sup> /hr.	123.8 ft <sup>2</sup> /hr.	145.3 ft <sup>2</sup> /hr.
		High Quality	108.7 ft <sup>2</sup> /hr.	91.5 ft <sup>2</sup> /hr.	108.7 ft <sup>2</sup> /hr.

### PC Specifications (PC not included)

#### Print Control Software

Windows® Operating System	Windows®10 (64bit)	
CPU	Intel® Core™ i5 2GHz or more recommended	
RAM	4GB or more recommended	
Screen Resolution	1,366 x 768 minimum, with 16-bit colour or higher	
HDD	Install Space	1GB or more
	Working Space	100GB

#### ColorGATE PS20 Select (bundled with RICOH Pro TF6251)

Windows® Operating System	32bit /64bit OS supported - Windows®7 (Professional, Enterprise, Ultimate) - Windows®8, Windows®10 (Pro, Enterprise) - Mac OS X 10.5.2 or later with Parallels Desktop 4.0 or later for Mac
CPU	Intel® i7/ AMD Quad-Core3GHz or more recommended
RAM	16GB or more recommended
HDD	Working Space 80GB

- Product appearance and specifications may be changed without prior notice for improvement purposes.
- The actual colour of the product may vary from the pictures.
- Windows are either registered trademarks or trademarks of Microsoft Corp. in the United States and/or other countries.
- Intel are trademarks of Intel Corporation in the United States and/or other countries.
- Company and product names are trademarks or registered trademarks of their respective companies.
- Please contact your sales representative for details on performance, specifications, and restricting conditions, etc.

**RICOH**  
imagine. change.

www.ricoh.ca



©2021 Ricoh Canada, Inc. All rights reserved.

Ricoh® and the Ricoh logo are registered trademarks of Ricoh Company, Ltd. All other trademarks are the property of their respective owners. The content of this document, and the appearance, features and specifications of Ricoh products and services are subject to change from time to time without notice. Products are shown with optional features. While care has been taken to ensure the accuracy of this information, Ricoh makes no representation or warranties about the accuracy, completeness or adequacy of the information contained herein, and shall not be liable for any errors or omissions in these materials. Actual results will vary depending upon use of the products and services, and the conditions and factors affecting performance. The only warranties for Ricoh products and services are as set forth in the express warranty statements accompanying them.