




RICOH ProcessDirector™

Automated
Workflow Management



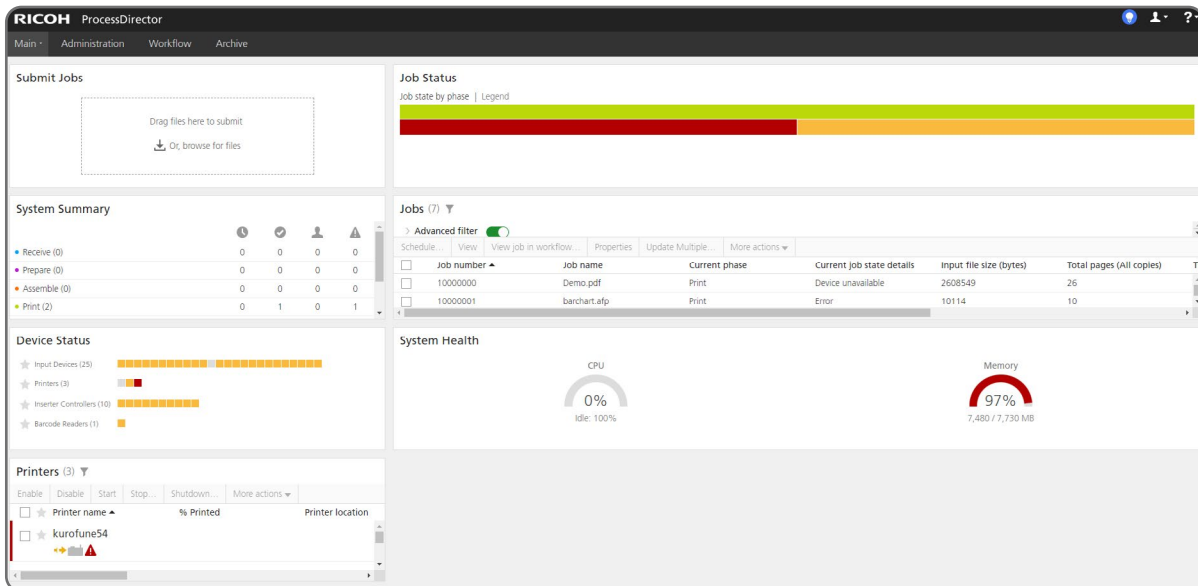
Efficiency and automation
at every stage in your workflow

RICOH
imagine. change.

A proven, scalable and integration-agnostic solution

RICOH ProcessDirector is a software solution designed to streamline and automate data-driven workflows. Both web and rules-based, this proven solution provides the power and processes for you to automate your production with confidence. Built on an open architecture, RICOH ProcessDirector helps businesses attain their strategic goals in:

- Productivity
- Reduced mailing costs
- Document / piece level tracking
- Warehouse document management
- Compliance
- Resource optimization
- Multi-channel delivery
- Print job validation



Go further with the latest integrations

- An award-winning integration with **RICOH Supervisor™** delivers **advanced visibility** including insight into production volume, printer and inserter throughput and operator productivity
- The **RICOH ProcessDirector FusionPro® Connect** feature allows integration with a FusionPro Server to **add VDP composition and imposition functionality**
- **RICOH ProcessDirector Avanti Slingshot® Connect** allows companies to **oversee business management details** and leverages the solutions capability to track all jobs in a single system

Increase workflow efficiency and empower your production team



Enhanced output management

Put all your systems and equipment to their best use by helping to integrate disparate and legacy systems, simplifying every step of the production output process.

Vendor-agnostic device connection to enhance overall productivity | Immediately identify missing pages | Save time by working with fully composed PDF files using rules-based processing



Workflow automation

Easily build complex workflows to compose, transform or optimize your data for delivery, no matter the job size. Reduce the number of manual touchpoints, avoiding costly errors.

Quickly build customized workflows with a simple drag-and-drop interface | Create a full audit trail | Consistently meet deadlines to maintain SLAs and customer satisfaction



Tracking and compliance

Aid in tracking and compliance efforts by monitoring documents from receipt to delivery, allowing for greater transparency to satisfy customer inquiries and meet critical SLAs.

Easily research and generate a piece-level audit trail | Verify that every piece is produced accurately | Create user groups to control access for greater security



Postal optimization

Streamline mail handling and achieve actual savings by using intelligence to minimize pages to reduce weight, qualify for the greatest postal discounts, and reduce wasted postage.

Minimize return mail costs by performing postal cleansing to update addresses | Electronically pre-sort documents to maximize postal discounts | Save time by working with fully composed PDF files



Multi-channel delivery

Manage personalized, multi-channel communications to deliver individual documents via a customer's preferred channel by integrating their delivery preferences into production workflows.

Integrate with your systems to ensure customer communication preferences are met | Communicate through multiple media with the same message for consistency | Send automated emails via the workflow



RICOH ProcessDirector **Next Steps**

Expect a strong return on your investment

RICOH ProcessDirector addresses specific operating challenges to help businesses reduce labor, errors and waste, and gain more efficiency, productivity and profitability during every state of document production.

Speak to your Ricoh sales representative to request a demonstration or a free software trial to personally experience the impact RICOH ProcessDirector can make in your organization.

Visit www.ricoh.com for more information.

RICOH
imagine. change.

©2024 Ricoh Company, Ltd. All rights reserved. Ricoh® and the Ricoh logo are registered trademarks of Ricoh Company, Ltd. All other trademarks are the property of their respective owners. This document is for informational purposes only and this document and any related services or products described herein are not intended to provide any legal, regulatory, compliance, or other similar advice. You are solely responsible for ensuring your own compliance with all legal, regulatory, compliance, or other similar obligations. While care has been taken to ensure the accuracy of this information, Ricoh makes no representation or warranties about the accuracy, completeness or adequacy of the information contained herein and shall not be liable for any errors or omissions in these materials. Actual results will vary depending upon use of the products and services and the conditions and factors affecting performance. The only warranties for Ricoh products and services are as set forth in the express warranty statements accompanying them.