

Continuous Feed Inkjet Printer

RICOH Pro VC60000

☒ Printer ☐ Copier ☐ Facsimile ☐ Scanner

RICOH
imagine. change.



Pro VC60000

492
fpm full-color

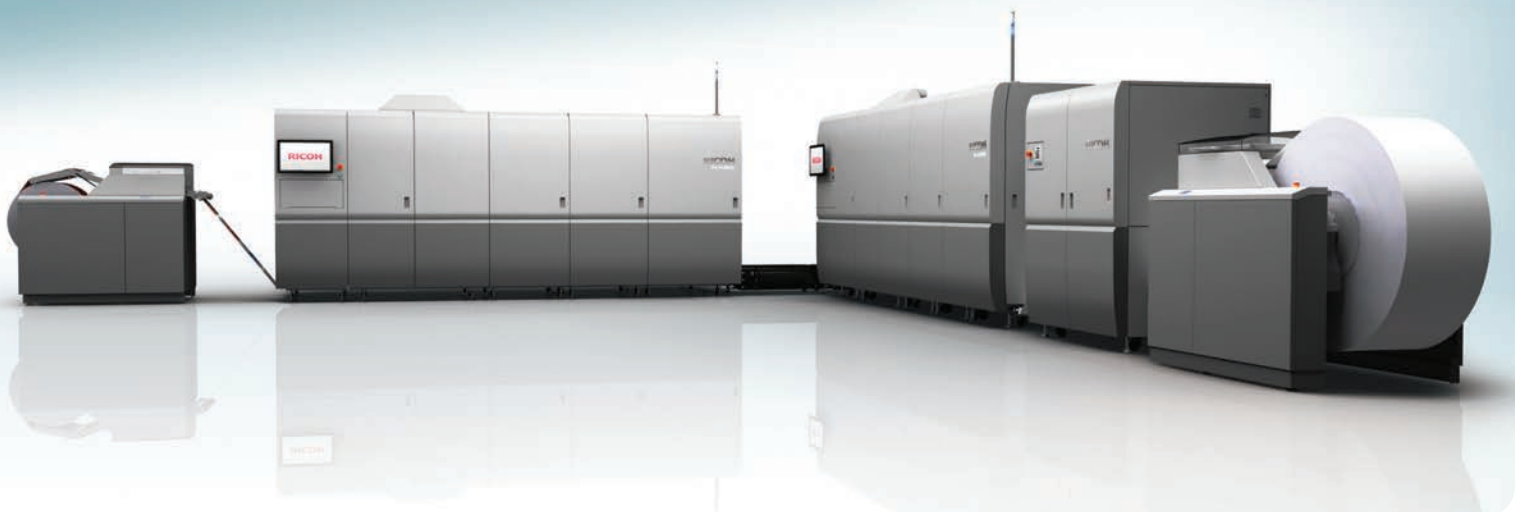
Produce high-volume, high-quality prints for less

Not every print job is the same. With the RICOH Pro VC60000 continuous feed inkjet printer, each printed piece can be personalized, customized, or last minute changes can be applied quickly and conveniently with near-offset quality. Whether you're printing books, brochures, direct mail, marketing collateral or looking to make a statement with your statements, you can add variable data to each page in a print job. Replace static images with variable data printing (VDP) jobs that an offset press can't support — and capture more revenue-generating opportunities.

The RICOH Pro VC60000 printing system is the result of Ricoh's decades of experience in the research, development and manufacturing of core inkjet technologies and paper transport systems. Key features and benefits of the RICOH Pro VC60000 are as follows:

- Latest generation Ricoh stainless steel inkjet print heads that yield exceptional life and high resolution that renders smooth gradations and sharp image detail.
- New Ricoh high-density aqueous-based pigment inks which produce a broad color gamut while economizing ink usage.
- Maintain color to color registration with Ricoh's unique Dynamic Image Shift technology. And for even tighter registration tolerances, there is Ricoh's optional Dynamic Printhead Positioning technology.
- In addition to supporting inkjet treated, inkjet coated, and uncoated papers, an optional undercoat unit and protective coat station are available to enable printing on offset coated papers. The undercoat application binds the ink to offset coated papers, and controls the dot gain. The protector coat provides scratch and scuff resistance to help maintain the print integrity as the printed piece moves through finishing and mailing systems.
- A new Ricoh digital front end with an easy-to-use graphical user interface supporting JDF, JMF, PDF and AFP.
- Ricoh professional services and software solutions enhance the total configuration, addressing specific applications and market requirements.
- **Pantone®-Approved:** To obtain accurate spot color reproductions, Ricoh has partnered with Pantone® to develop Look Up Tables (LUTs) specific to the Pro VC60000. These LUTs should eliminate color adjustments on press to simulate Pantone® colors, and are available at no charge.*
*The Pantone Look Up Tables are only applicable within the gamut of the Pro VC60000.
- **Controlling Ink Usage on Press:** Maximizing print quality with efficient ink usage is a challenge in satisfying customers and managing production costs. With Ricoh's Ink Savvy option, you have an automated process to reduce ink usage while maintaining high quality color. Ink Savvy takes gray component removal to the next level by adding intelligence to the process to compensate for potential color shifts and maintain the visual color fidelity.

Backed by Ricoh's extensive network of highly experienced digital inkjet support personnel, the Pro VC60000 enables customers to produce a whole new range of applications reliably and efficiently.



Uncompromising quality ... quickly and economically

Build and grow your business with the RICOH Pro VC60000

Print quickly, continuously

Produce direct mail, manuals, books, catalogs, collateral, and more at up to 492 feet per minute (150 meters per minute) at 600 x 600 dpi using a wide range of paper stocks. Or for more critical applications, print at 1200 x 1200 dpi at speeds up to 164 feet per minute (50 meters per minute).



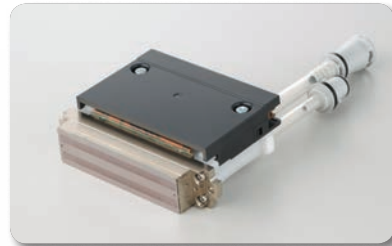
Reduce costs, add more profit and opportunities

Make-ready requirements and plate costs can make it prohibitive to print offset for short run jobs or jobs that require quick turn around. And cut sheet systems may not have the print speed to produce the requested quantities in the expected timeframe. Add the RICOH Pro VC60000 to your production environment so you can sell value-added print services like VDP and be competitive on short-run, on-demand jobs. And with the ability to print up to a 54 inch repeatable print length, that means supporting larger signatures and new print applications.



Ricoh innovation at work

Ricoh's high resolution, drop-on demand stainless steel printheads adjust ink drop size dynamically for high quality results. And multiple drop sizes allow for a more efficient use of ink in printing, which not only reduces the possibility of quality issues, but has direct impact on production cost savings.



Ensuring you deliver to your customers

When it comes to reliability, everyone touts the strengths of their system. But the real question is if you have a reliable team behind the system that brings you back into production with minimal delay. Ricoh understands and delivers that protection using a dedicated production print service organization. With scalable service programs that can be tailored to meet your business requirements, Ricoh provides end to end coverage on your production print system with 24x7 access to spare parts, on call duty managers, and direct escalation to level II and III support teams. Together, we can maximize your print output and ensure you meet your customers requirements.



Exceptional results for a wide range of work

- 1 UC8000 Undercoater (optional):** One or both sides of the web can be coated with an anilox roller to enable printing on offset coated paper. This coating is a catalyst layer to improve adhesion of ink, while controlling dot gain and beading to produce high quality printing that goes beyond what most inkjet systems produce today.
- 2 Base Unit (two per system):** A modular designed system for easy installation and configuration flexibility. The system is comprised of the entrance unit and main unit which house the CMYK print heads and paper path, standard dryer unit and exit unit.
- 3 Protector Coat Unit (optional):** Protect prints from smearing and smudging with a protective coat that covers the entire page, which is required for offset coated paper. The integrated print station improves "scratch resistance," making the printed output ideal for direct mail applications.
- 4 Spot Color Unit (optional):** Utilizing the same modular unit that houses the Protector Coat print heads, this print head array can instead support a fifth ink. MICR is the first ink available for this unit with other spot colors to follow.
- 5 Dryer Unit (standard, one per base unit):** Radiant heat removes moisture from the printed page, preparing it for printing on the second side or inline finishing. Optional air knife dryers are mandatory for offset coated papers.
- 6 External Dryer Unit (optional/not shown):** The External Dryer increases the drying capacity for higher coverage applications, especially on inkjet coated and offset coated papers to ensure the ink sets properly before finishing.
- 7 Exit Unit:** Fine-tune media handling and tensioning controls to help ensure every page is produced with uncompromising consistency. For quality assurance, a Contact Image Sensor (CIS) is used to check for clogging, alignment, and uniformity of print heads.
- 8 RICOH's TotalFlow® Print Server R600A:** With intuitive operation, operators can control job management, system configuration, and maintenance tasks.
- 9 Turn Bar Unit for I or L configurations:** Fit your unique space and configuration requirements with a flexible system that can be installed in a straight line or left angle.
- 10 Support for a variety of finishing devices:** Choose from multiple Ricoh partners to provide a variety of finishing solutions, such as: unwind, rewind, cut, fold, dynamic perforation, vision systems and inline processing, plus a solution for books. And even though the finishing devices are from a Ricoh partner, Ricoh provides the service and support on those items.





The RICOH TotalFlow® Print Server R600A is scalable to support a range of complex jobs.



RICOH Pro VC60000



Expand your print business

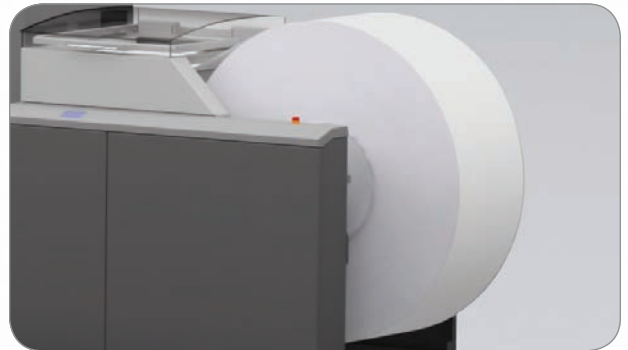
Production when you need it

With the long-lasting Piezo printheads, there are less replacement interruptions. And with 20 liters of every color of ink, you can reduce how often you have to replace ink. When you do need to replace a color, on-the-fly ink replacement keeps the system up and running.



Handle more types of jobs

In addition to supporting paper weights up to 250 gsm, the RICOH Pro VC60000 prints on a constantly growing list of supported papers, including offset coated papers. The optional UC8000 Undercoat module applies a priming agent on one or both sides of the offset coated paper to control ink placement and dot gain to result in high quality printing.



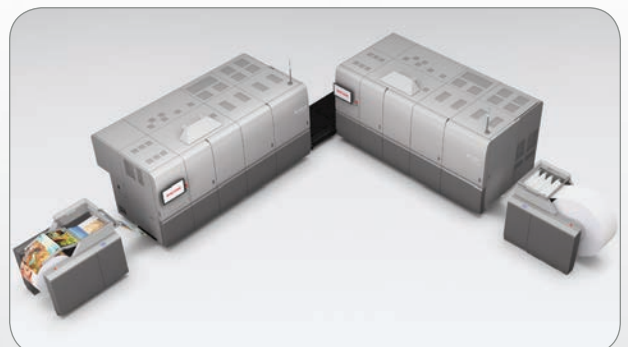
Make every job unique — and profitable

With the RICOH Pro VC60000, you can add dynamic personalized printing to every page and meet tight deadlines while adding value. Whether it's adding critical billing messages to specific transactional documents, personalizing a direct mail piece or even custom-printing a booklet, you can deliver customized output to clients at incredibly fast speeds to help ensure the right information is seen by the right people when they need it most.



Scalable and configurable

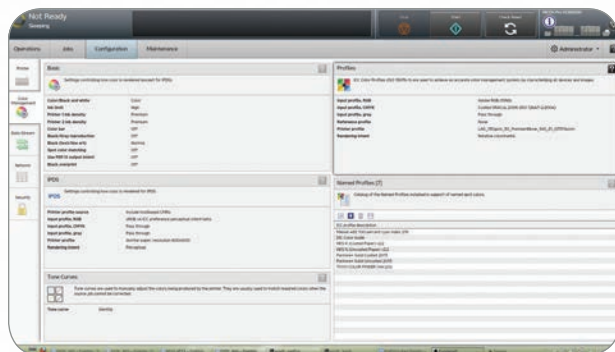
Configure the RICOH Pro VC60000 to fit your printing and finishing applications. You can add faster drying or protective coating units to protect output from scratching or running and enhance production quality even more. Choose to install the device in an in-line or L-shaped format to accommodate other production shop equipment.



Customize printing to meet customer demands

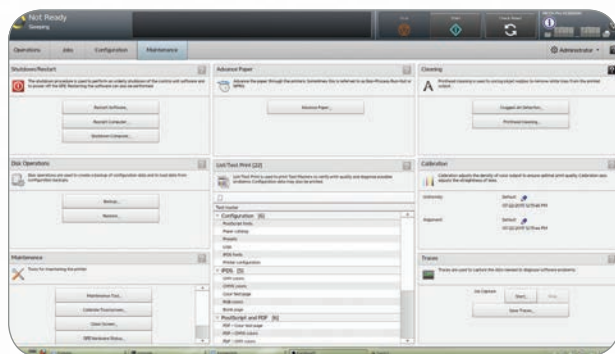
Automate repetitive tasks

Use the RICOH TotalFlow® Print Server R600A to schedule and monitor jobs, check system status and transition to the next print stage seamlessly with fewer human touchpoints. Complete a wider range of projects, including on-demand orders, with higher quality and fewer mistakes and reduce costs for your organization. You can even use the intuitive interface remotely to automate many print processes that require repetitive tasks that can slow production.



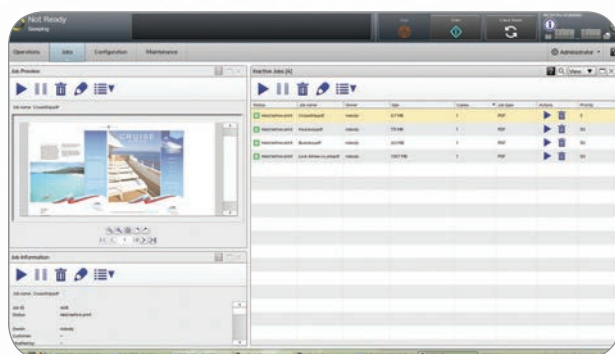
Perform production print tasks faster, more accurately

With the RICOH TotalFlow® Print Server R600A, you can work on even the most complex jobs, including variable addressing and variable images, without missing a beat. Customize the user interface with the features and options you need most. They're shown as "Pods" and can be positioned anywhere on the display swiftly with drag-and-drop. You can check status and errors with a single glance and make changes or schedule maintenance in only moments. It accepts a wide range of data streams — including PS, PDF, PDF/VT, and AFP/IPDS — so you can complete almost any job with incredible speed and convenience.



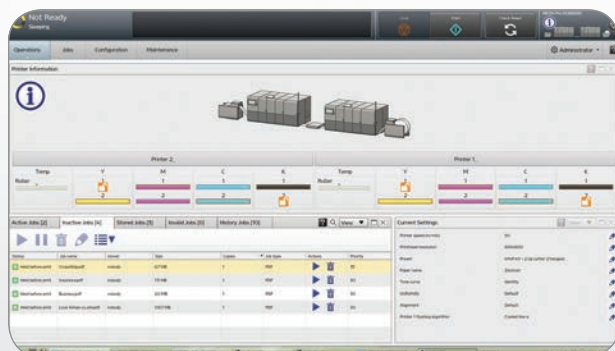
Customize how you want to print

Customize the RICOH TotalFlow® Print Server R600A interface to suit your print preferences and to access critical print information when you need it most. Align print jobs by status, owner, submission time or other features. Add "Pods" to check supply status or to make fast configurations. You can toggle between them with one-touch control. And, you can change them at any time. You can even add shortcuts to frequently used information and tasks so you can meet deadlines consistently.



Print with convenience, from anywhere

You may be tied to every print job, but that doesn't mean you have to be tied to the printer when managing the operations of a commercial print shop. With the RICOH TotalFlow® Print Server R600A, you can manage your print operations from almost any location using the intuitive HTML job management console. Whether you're on the shop floor, at your desk or across the street in a meeting, you can access critical job information from a web browser. Check status, manage configurations and plan maintenance remotely and transition to the next job with fewer delays.



RICOH Pro VC60000

SYSTEM SPECIFICATIONS

Imaging Technology

Piezo Drop on Demand
Dynamic Variable Drop Size – @ 2 bits/drop
Stochastic Screening
Ricoh Print Heads – 10 print heads per color

Engine Technology

Color Inkjet 4 colors CMYK, Protector Coat (Optional), Undercoat (Optional)
Paper Path Tight Web
Web Width 20.5" (520.7 mm)
Printable Area – 20" (508 mm)
(non-printed area 2 mm from paper edges)*
Paper Length 4" to 54" (101.6 to 1371.6 mm)
Machine Layout – Duplex "L" or Inline Configuration

Engine Components

Base Unit*
Dimensions (WxDxH) 167.40" (4070 mm) x 79.72" (2025 mm) x 78.74" (2000 mm)
Weight 8531.9 lbs. (3870 kg)
Protector Coat Unit (Optional)
Dimensions (WxDxH) 35.27" (850 mm) x 79.72" (2025 mm) x 78.74" (2000 mm)
Weight 1168.4 lbs. (530 kg)
Undercoat Unit (Optional)
Dimensions (WxDxH) 56.30" (1430 mm) x 73.94" (1878 mm) x 71.69" (1821 mm)
Weight 1646.9 lbs. (747 kg)

*Based on one unit (two units per configuration)

Operating Environment

Temperature 64.4 – 75.2° F (18 – 24° C)
(recommended)
Humidity (recommended) 40 – 60%

Productivity

Resolution/Print speed 600 x 600 dpi : 492 feet/min, or, 150 meters/min
1200 x 600 dpi: 246 feet/min, or, 75 meters/min
1200 x 1200 dpi: 164 feet/min, or, 50 meters/min

Media Support

Media Types Plain, General Offset Coated* and Uncoated, IJ coated, IJ treated, Ground-Wood, Recycled
Paper Weight 40 gsm to 250 gsm

*Optional Undercoat Unit and Protector Coat unit required for general offset coated.

Supplies

Pro Ink Cartridge Black VC60000
Pro Ink Cartridge Cyan VC60000
Pro Ink Cartridge Magenta VC60000
Pro Ink Cartridge Yellow VC60000
Pro Undercoat Cartridge VC60000
Pro Protector Coat Cartridge VC60000
Pro MICR Cartridge VC60000

Finishing

Specification 3rd party finishing devices I/F specification: Type 1A/+
Finishing Solutions Multiple partners provide a variety of unwind, rewind, cut, fold, dynamic perforation, vision systems and inline processing, including a solution for books

TotalFlow R600A Digital Front End

Architecture

Processor Architecture Intel Xeon x64
OS Linux

Physical Characteristics

Dimensions (WxDxH) 39.5" (1003 mm) x 24" (609 mm) x 49" (1245 mm)
Weight 716.5 lbs. (325 kg)

Data Stream Support

PostScript
PDF (APPE)
PDF/VT
IPDS

Job Submission

FTP
IPP
LPR
Raw Port
Operator Console
Virtual Printer/Hot Folder Support

Graphical User Interface

Display on each print engine
Login by Role: Admin, Operator, Maintenance or Customizable
Highly customizable user interface layout by role
Graphical Printer & Supplies Status
Operator Messages
Paper Catalog/Paper Setup

Job Management

Graphical Job Ticketing/Job Preview – Native JDF
Banner
Operator Comments
Sides Printed
Copies
Rotate, Reduce/Enlarge, Image Alignment
Special Marks
Job Imposition
Job Queue Management
Submit
Suspend
Hold
Process Next
Delete Job
View Jobs
Job Status
Active
Inactive
Stored
All Jobs
Job History

Color Management

ICC Profile Support
Enhanced Color Management by Side and Object Type
Device Link Support
Spot color dictionaries (Pantone, Toyo, DIC, and HKS)
CMR Support (AFP/IPDS)

Software Support

Ricoh ProcessDirector for AIX, Linux or Windows
Version 3.1 or later releases
TotalFlow BatchBuilder for Windows
Version 1.1
InfoPrint manager for AIX, Linux, Windows
Version 3.1 or later releases
Print Services Facility for AIX, Linux or Windows
Version 3.1 or later releases

Note: For Linux SLES, or, Red Hat

RICOH
imagine. change.

www.ricoh-usa.com

Ricoh USA, Inc., 70 Valley Stream Parkway, Malvern, PA 19355, 1-800-63-RICOH
©2017 Ricoh USA, Inc. All Rights Reserved. Ricoh® and the Ricoh Logo are registered trademarks of Ricoh Company, Ltd. All other trademarks are the property of their respective owners.
The content of this document, and the appearance, features and specifications of Ricoh products and services are subject to change from time to time without notice. Products are shown with optional features. While care has been taken to ensure the accuracy of this information, Ricoh makes no representation or warranties about the accuracy, completeness or adequacy of the information contained herein, and shall not be liable for any errors or omissions in these materials. Actual results will vary depending upon use of the products and services, and the conditions and factors affecting performance. The only warranties for Ricoh products and services are as set forth in the express warranty statements accompanying them.

R3546-1

