



Intelligent Delivery Services

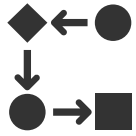
Revolutionize the way incoming mail is handled and delivered — regardless of where employees are working.

The success of your business and its ability to meet strategic objectives depends upon capturing, analyzing and accelerating inbound communications with precise accuracy. This basic, yet essential, need has become even more consequential with flexible workforce models and hybrid employment scenarios becoming the norm. Staff members, partners and other collaborators may be working offsite in locations that are miles apart, making it nearly impossible to share and track physical incoming mail. Yet, business must go on.

That's where AI and the experience of Ricoh come in.

RICOH
imagine. change.

Transformative mail delivery for companies like yours.



Remove obstacles to increase business continuity.

Leverage Ricoh's automated technologies and services to convert physical mail into digital formats and make them accessible to target recipients in near real-time. Built on a scalable, secured, cloud-hosted ecosystem, this solution uses automation to reduce lost or delayed mail, provide an audit trail and ensure your staff can get the information they need anytime, anywhere, from any device.



Choose the deployment model that best meets your workflow.

Every company's inbound communications differ, but all must ensure their information is protected. This secured solution is hosted within AmazonTM* Web Services (AWS) cloud environment and supported by policies and procedures for compliance with governing requirements such as PCI[®] and HITRUST[®]. We offer blended hybrid on-site and off-site models with various processing service options to maximize economies of scale while ensuring consistent, high-quality service delivery and security.

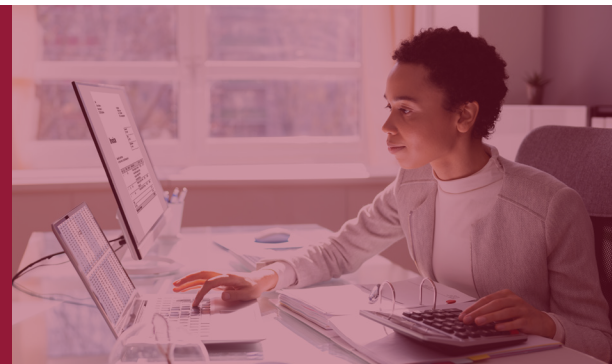


Optimize efficiencies with actionable insights.

Your company receives an endless volume of inbound communications. Transform them into insights that influence business outcomes. Our platform is continuously learning, enabling it to identify and act on frequent behaviors and recurring preferences such as disposing of postcards or physically receiving large mail pieces. An intuitive dashboard empowers managers to view and track performance trends, analyze data and monitor productivity in near real-time.

Ricoh, a proven technology partner.

Ricoh's combination of certified expertise, service excellence and 85-year history of innovation has helped clients navigate their most pressing information challenges. Our comprehensive RICOH Intelligent Business Platform brings the next level of AI to your company with minimal capital investment and rapid deployment. And, of course, you can expect dedicated support from Ricoh's Digital Services Center of Excellence.



To learn more visit ricoh-usa.com/intelligentdelivery

RICOH
imagine. change.

Ricoh USA, Inc., 300 Eagleview Blvd, Exton, PA 19341, 1-800-63-RICOH. ©2022 Ricoh USA, Inc. All rights reserved. Ricoh® and the Ricoh logo are registered trademarks of Ricoh Company, Ltd. All other trademarks are the property of their respective owners. This document is for informational purposes only and this document and any related services or products described herein are not intended to provide any legal, regulatory, compliance, or other similar advice. You are solely responsible for ensuring your own compliance with all legal, regulatory, compliance, or other similar obligations. While care has been taken to ensure the accuracy of this information, Ricoh makes no representation or warranties about the accuracy, completeness or adequacy of the information contained herein, and shall not be liable for any errors or omissions in these materials. Actual results will vary depending upon use of the products and services and the conditions and factors affecting performance. The only warranties for Ricoh products and services are as set forth in the express warranty statements accompanying them.

*Amazon Web Services®, the "Powered by Amazon Web Services" logo are trademarks of Amazon.com, Inc. or its affiliates in the United States and/or other countries.