

Wide Format Digital Imaging System

# RICOH MP W6700SP

Printer  Copier  Facsimile  Scanner

**RICOH**  
imagine. change.



MP W6700SP

6.7  
ppm monochrome

# Enhance the way you communicate and transform your business

For the architects, engineers and contractors who do business in today's fast-paced environment, communication is everything. Those who can deliver the precision that jobs demand, and meet critical deadlines on time and on budget, have a significant edge. No one understands that better than Ricoh, and to that end, we are proud to bring forward the all-new RICOH® MP W6700SP Wide Format Digital Imaging System. This solution was built to enable greater customization, improve user collaboration and empower workgroups with the quality and control they need to produce more jobs in-house.

With advanced tools, best-in-class features, greater security and the power to make information more mobile than ever, the RICOH MP W6700SP opens up a world of possibilities.

- Black-and-white printing at 6.7 ppm ensures critical deadlines are met
- High-resolution color scanning and scan-to features advance the pace of business and reduce costs
- An innovative, space-saving design maximizes ease of use
- Print documents in a horizontal or vertical format for greater flexibility
- SDK integration allows for customized solutions and unique workflow applications that streamline your business

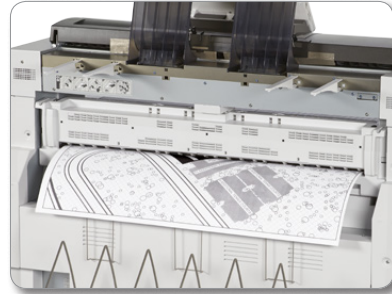


## Maximize productivity with smart tools and intelligent technologies

With the power to customize your workflow, deploy unique applications and create shortcuts for repeatable tasks, you'll ensure that you are always operating at peak performance.

### Do more from one centralized hub

The RICOH MP W6700SP, with its full-color touch screen LCD control panel, puts a robust suite of tools and multifunction capabilities right at your fingertips. Print, copy, scan and distribute plans, drawings, maps and more, all at the touch of a button. This system delivers the power you need. At its core is a powerful 320GB Hard Disk Drive as well as a versatile Document Server. Together, they allow you to store, preview, and recall jobs where and when you need them. In addition, having the ability to multitask from a single device reduces the need for IT administrators to manage and maintain multiple systems. This is wide format printing for a modern, mobile, work environment.



### Customize your workflow and drive greater efficiency

When you're under tight deadlines and seconds count, you want a streamlined workflow you can always rely on — one that won't ever slow you down. The RICOH MP W6700SP delivers with the unique ability to create short-cut icons and customize workflows by organization, workgroup and user. Individuals can personalize their experience, tailoring the control panel to display the features and functions they access most often. Users can create shortcut icons to execute frequently used and complex jobs at the touch of a button. This intuitive feature greatly enhances company-wide productivity and drastically reduces error.



### Empower your mobile workforce with remote capabilities

Business happens fast. To keep moving forward, you need the flexibility to make information mobile and shareable at a moment's notice. Remote technologies on the RICOH MP W6700SP support today's mobile workforce and provide IT administrators the ability to view, monitor and change system settings via a web-browser utilizing Web Image Monitor. Users out in the field can keep projects moving by sending and printing jobs remotely using Web Print Tool. Walk-up users enjoy the added convenience of printing from and scanning to their USB drive or SD card directly at the control panel, further enabling ease of use.



### Use less energy while getting more done

Discover a range of features that work together to enhance productivity, improve efficiency and speed the flow of communications — all in an eco-friendly design. Ricoh is Driving Sustainability for Our Future by delivering superior energy-saving features without compromising productivity. Plus, the device meets EPEAT® Gold criteria\* — a global environmental rating system for electronic products — and is certified with the latest ENERGY STAR® specifications.



\*EPEAT Gold rating is applicable only in the USA.





# Be crisp, be smart, be creative

Achieve the precision you need to maintain a professional look and capture new opportunities

## Upgrade your image and advance your business

No matter how many times it's been said, it remains more true than ever: image matters. And for architects, engineers and contractors, the right image can be the key to landing an account, winning a bid and maintaining a reputation. On this new wide format powerhouse, capture razor sharp digital images with crisp lines, accurate details and clear half-tone representations. With print and scan resolutions up to 600 dpi and the ability to reproduce half-tones with 256-level grayscale, you can deliver professional quality output every time and isolate key areas that relate to a specific job.



## Scan full-color originals and get them where they need to be

Whether in everyday collaborative work situations or time-sensitive scenarios, a built-in color scanner allows you to capture and distribute critical documents immediately with scan-to functionalities, including Scan-to-Email/Folder/FTP/URL/Document Server. Eliminate the time and expense of printing and shipping reprints through a courier. Now, simply take digital files to a job site via the Scan-to-USB/SD card feature. In addition, files can be saved as JPG, TIFF and PDF, reducing storage requirements for large format documents and further freeing up floor space.



## Produce more jobs in-house and grow

With the flexibility to do more in-house and on schedule, you can regain control of your workloads and turnaround times, plus save money, because there is less need to outsource. An intuitive 2-Roll Drawer in the system allows for greater flexibility and supports multiple media stocks and types, including plain paper, translucent and vellum — from letter size up to 36 inches. With the RICOH MP W6700SP, AEC firms can produce documents in the way they were intended to be seen while pay-for-print environments are able to offer expanded options to clients. While no two jobs or situations are exactly alike, the system provides unprecedented versatility, allowing users to communicate in more dynamic ways than ever.



## Keep your business, and best ideas, protected

In an industry where there are highly competitive new business proposals taking place and ultra-sensitive documents within the workflow, it's vital to have the right technologies to safeguard the integrity of your ideas. On the RICOH MP W6700SP, Windows Authentication, PDF Encryption and an optional DataOverwriteSecurity System (DOSS), help keep documents secure at every stage of the workflow. Furthermore, the DOSS automatically overwrites the area of the hard drive used for image processing after the completion of each job. This helps prevent anyone from extracting sensitive documents from the hard drive and gives the IT department added peace of mind.

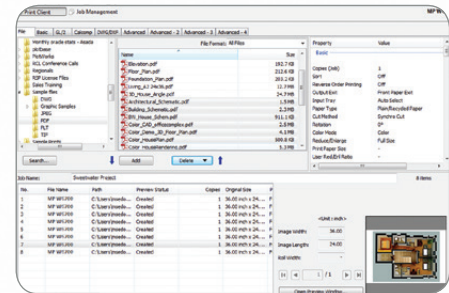


# Simplify your wide format workflow

The optional RICOH PrintCopy Tool offers centralized management with incredible print control

## Centralized print management

Print and edit any file quickly and easily — even if you don't have the software application that was used to create the file. Images, text and other elements can be added prior to printing, including preset stamps, headers and footers, to ensure every job can be identified at a glance.



## Work with multiple file formats

Print any file you need with one click. The RICOH PrintCopy Tool is designed to collect files from disparate applications and merge them as one job for fast, easy print management. There's no need to invest in each individual application — the tool integrates conveniently to do the work for you. It also lets users identify specific documents and place them in the job print queue where they can be printed as a batch to streamline workflow.



## Effective color management, from anywhere

Edit files, whether open or scanned, to reduce noise, change alignment and balance colors for more effective results. The Color Editor's intuitive interface ensures that any user can make the necessary edits to maximize impact and efficiency.



## Wide format in a wider range of places

Use the RICOH PrintCopy Tool to scan schematics, drawings and other documents on a wide format MFP, then print them at another network color printer or plotter to ensure the right information is getting to the right people at the right time. Do it all in one easy step. Users can even change the size of the original to ensure it's compatible with specific devices with limited capabilities.



# Designed with users in mind

The RICOH MP W6700SP offers a robust feature set steeped in innovation, usability and simplicity. The system was created to fit seamlessly into the workspaces and wide format workflows of architectural, engineering and construction firms, pay-for-print environments, utilities and telecommunications companies, government offices and manufacturing workgroups.

This wide format workhorse performs in the tightest of spaces and in the most convenient of places, always mindful of its footprint and environmental impact. In fact, it was specifically designed to deliver the biggest bang in a lesser footprint — one of the smallest in its class. Available options allow you to build an end-to-end solution that fits your applications, work processes and business needs.





# Ricoh goes big in wide format printing

We have dedicated ourselves to meeting the needs of the architectural, engineering and construction industries and anyone who relies on wide format printing, with innovation, intuitive design and technologies that make things easier and more efficient. The RICOH MP W6700SP represents a bold step forward when it comes to enhancing and streamlining communications, improving the way people work and collaborate and enabling people's best ideas to rise to the top.

With this system, we envisioned a new kind of wide format solution — one that would lead to faster job turnaround times, easier multitasking, higher customer satisfaction ratings and a lower Total Cost of Ownership. We sought a right-sized solution that would empower industries and organizations to do more in-house with expanded media options, plus customizable workflows that would ultimately reduce expenses and the need to outsource. Most of all, we wanted to put wide format power where it belongs — in the hands, and fingers, of users. The MP W6700SP from Ricoh.

This is only the beginning.

- 1 Original Output Stacker:** Space-saving upper original output stacker holds up to 50 D-size originals for minimal interruptions when making copies and convenient retrieval of copies and prints.
- 2 Control Panel:** The newly designed 9" tiltable full-color touch screen LCD control panel interface makes walk-up operation easy and intuitive. Animated step-by-step guidance helps users change toner and clear issues if they should arise.
- 3 Color Scanner:** The built-in color scanner allows users the ability to capture color markups in-house. With the many scan-to functionalities (Email/Folder/FTP/URL/Document Server/USB/SD Card) users achieve greater mobility, while improving workflow.
- 4 Clamshell Design:** The intuitive, user-friendly front access clamshell design provides access to all areas of the paper path and makes toner and paper roll replacement quick and easy.
- 5 Standard 2-Roll Drawer:** An intuitive 2-roll drawer allows for greater flexibility and supports multiple media stocks and types, including plain paper, translucent and vellum. The front-loading drawer allows for easy access and system placement in tight environments.
- 6 USB/SD Card Option:** Users can scan directly to a USB or SD card and stay on the go. Ideal for the mobile employee or visiting clients who wish to capture documents in electronic form for output at a later time.
- 7 User Replaceable Toner:** The toner cartridge is easily accessible for a simple, clean, one-step replacement process. In addition, Ricoh offers a toner container take-back program for environmentally friendly recycling.
- 8 Front Copy Exit:** The front copy exit tray allows for stacks up to 99 D-size documents, making for efficient continuous copying.
- 9 Bypass Tray:** The bypass tray allows users to keep more jobs in-house by allowing users to print or copy documents onto single sheets of specialty media.
- 10 Storage:** Additional storage space is provided directly below the MP W6700SP's standard mounted 2-roll drawer, providing a convenient place for storing toner and other printing supplies, reducing clutter and saving floor space.
- 11 Optional Front & Back Copy Stackers (Not Shown):** Front and rear copy stackers capture oversized output allowing users to expand flexibility and high-volume capabilities.

To view detailed features of our wide format products online go to [www.ricoh-usa.com/products](http://www.ricoh-usa.com/products)

# RICOH MP W6700SP

## SYSTEM SPECIFICATIONS

### General Specifications

Configuration	Console
Copy/Printing Process	Electro-photographic printing
Paper Source	2-roll paper feeder
Warm-Up Time	Less than 120 Seconds
First Copy	19 seconds (D-size)
Copying Speed	6.7 ppm (D-size)
Resolution	600 dpi x 600 dpi
Grayscale Scanning	256 levels
Grayscale Printing	2 levels
Reduction/Enlargement	18 presets; 25% to 400% by 0.1% increments
Zoom	25% to 400% by 0.1% increments
Multiple Copies	1 to 99 (ten key input)
Cutting Method	Synchronized, preset size, variable
Memory Capacity	2.5 GB
Hard Disk Drive	320 GB (shared with copier/printer/scanner)
Original Feed	Sheet
Original Set Position	Center
Original/Copy/Scan Size	Minimum: 8.27" x 8.27" (210 mm x 210 mm) Maximum: 36" x 590.55" (914.4 mm x 15,000 mm) 14 – 28 lbs.
Original Paper Weight	52.3 – 110 gsm (Paper Roll)
Output Paper Weight	52.3 – 110 gsm (Paper Roll)
Maximum Thickness	.04" (1 mm)
Original Exits	2 Ways: Original Rear Exit (straight through) / Original Upper Exit Front: 99 sheets (Plain Paper D-size LEF) Back: 10 sheets (Plain Paper E-size LEF)
Copy Exits	120 V, 20A (max), 60 Hz
Power Source	1.44 kW per hour
Max Power Consumption	49.2" x 29.7" x 47.8" (1,250 x 755 x 1,215 mm)
Dimensions (WxDxH)	507 lbs. (230 kg)
Weight	

### Copier Features

Copy Modes (Text mode, Text/Photo mode, Photo mode, Drawing mode, Generation Text mode, Generation Photo mode, Pasted Original mode, Background Line mode, Highlighter mode), Auto Paper Select (APS), Auto Replace/Enlargement, User Auto Reduce/Enlargement, Preset Reduce/Enlargement, Zoom, Size Magnification, Directional Magnification (percent and mm/inch), Fine Magnification, Image Overlay, Format Overlay, Negative/Positive, Mirroring, Double Copy, Repeat Copy, Image Shift - Front/Rear/Left/Right (0 to +/- 200 mm by 1 mm steps), Preset Stamps, User Preset Stamps, Data Stamps, Page Stamps

### Printer Specifications

Controller Board	Embedded
CPU	Calpella 1.06 GHz
Print Speed	6.7 ppm D-size, 3.3 ppm E-size
Print Resolution	Up to 600 dpi
Print Drivers	Adobe® PostScript3, HDI (AutoCad)
Supported File Formats	HP-GL, HP-GL2, HP-RTL, TIFF, CALS, JPEG, PostScript, PDF, MS Office®, DWG/DWF
Font	European 136 fonts (PS3)
Network Interface	Standard: Ethernet 10/100BASE-TX Optional: Wireless LAN IEEE 802.11a/g/n TCP/IP, UDP/IP, ICMP/IP
Network Protocol	Windows XP/Vista/7/8/8.1/2003 Server/2008 Server/2008R2 Server/2012 Server/2012R2 Server, Mac OS (10.7 or later)
Supported OS	Print from USB/SD (JPEG/TIFF/PDF)
Media-to-Print	Auto Paper Select, Pen Setting, Media Selection, Stamp Setting, Roll Select, Language Setting, Set-up Launcher, Output Tray Select, Online Help Menu, Multiple Print Sets, Combine Images, Locked Print Document Server, Sample Print, Remote Print via Internet, Magnification, Mirror Setting, Border Setting, Set X and Y Axis, Transparency Mode, Delete After Printing, Engine Status Monitor, Encryption, PDF Batch Print
Printer Features	English, Brazilian Portuguese, Danish, Dutch, Finnish, French, German, Italian, Japanese, Korean, Norwegian, Polish, Romanian, Russian, Simplified Chinese, Spanish, Swedish, Traditional Chinese, Turkish
Supported Languages	
Scanner Specifications	
Controller Board	Embedded
Color Scan	Standard
Scan-to-Multimedia	Standard
Media-to-Print	Standard
Scan Speed	Color: 26.7 mm/s or 1.05 ips Monochrome: 80 mm/s or 3.15 ips Up to 600 dpi; TWAIN: Up to 1200 dpi
Scan Resolution	Color: Text/Photo mode, Photo
Scan Mode	Monochrome: Drawing mode (Default, Text mode, Text/Photo mode, Text/Drawing mode, Photo mode, Gray scale) Auto, Preset Paper Size, Custom
Scan Detection	Network: TCP/IP
Scan Protocol	Sending Email: SMTP AUTH, POP before SMTP Scan-to-Folder: SMB, FTP, NCP

### Image Density

Edit	9 levels of lighter to darker
Scanner Features	Erase Border, Positive/Negative, Mirror Image Scan-to-Email (SMTP), Scan-to-Folder (SMB, FTP), Scan-to-URL, Scan-to-USB/SD, Network TWAIN, Scan-to-NCP, Scan-to-Document Server
Preview	Full View: 18" x 24"; Section Preview: 36" x 48"
File Formats	Multi page TIFF, Single page TIFF, Multi page PDF, Single page PDF, Single page JPEG, High Compression PDF, PDF/A

### Scanner Features

Scan-to Email/Folder/URL/NCP/Document Server and Media: USB & SD Card; Network TWAIN Scan; Preview before Transmission; Auto File Naming & Setting; Simultaneous Transmission

### External Options

Roll Holder Unit Type A	2 holders, max roll diameter 3" core
Multi Stacker Type 7140	
Rear Stacker Type 7140	
Original Hanger	
Original Tray Type G	

Note: Cannot configure Paper Cassette Unit and Roll Unit simultaneously

### Internal Options

SD Card for NetWare Print, OCR Unit, Browser Unit, Wireless LAN (IEEE 802.11a/g/n), Zoffy (CC Certification), DataOverwriteSecurity Unit, SD Card for Network Printing

### Print Utility Options

PrintCopy Tool  
DWG Option Type D  
Upgrade Kit for DWG Option Type D

### Security Options

Authentication, Hard Disk Drive Data Encryption, S/MIME for Scan-to-Email, IPsec Communication, Address Book Encryption, SSL Communication, NSMPv3 Support, Encryption of PDF Password (for printing secure PDF), Unauthorized Copy Control, Network Protocol On/Off, DataOverwriteSecurity Unit (option)

### Consumables

#### Toner Type 1160W

For maximum performance and yield, we recommend using genuine Ricoh parts and supplies.

Specifications are subject to change without notice.



**RICOH**  
imagine. change.

[www.ricoh-usa.com](http://www.ricoh-usa.com)

Ricoh USA, Inc., 70 Valley Stream Parkway, Malvern, PA 19355, 1-800-63-RICOH

Ricoh® and the Ricoh Logo are registered trademarks of Ricoh Company, Ltd. All other trademarks are the property of their respective owners. ©2016 Ricoh USA, Inc. All Rights Reserved. The content of this document, and the appearance, features and specifications of Ricoh products and services are subject to change from time to time without notice. Products are shown with optional features. While care has been taken to ensure the accuracy of this information, Ricoh makes no representation or warranties about the accuracy, completeness or adequacy of the information contained herein, and shall not be liable for any errors or omissions in these materials. Actual results will vary depending upon use of the products and services, and the conditions and factors affecting performance. The only warranties for Ricoh products and services are as set forth in the express warranty statements accompanying them.

R3623-C