

RICOH Always Current Technology

Scalable intelligence



Scalable and intelligent solutions for forward-thinking businesses

Looking for hardware that supports intelligent updates and can be scaled to meet your changing business needs over time? We have the answer. With RICOH Always Current Technology enabled, the software powering your intelligent device can be regularly updated.

With work styles and technology constantly evolving, our customers look to us for product enhancements that will drive productivity and improve efficiency. To protect your investment in Ricoh technology, we've changed the way that we make new features and updates available.

RICOH Always Current Technology allows us to deliver timely solutions to address your changing needs. With RICOH Always Current Technology enabled, the capabilities of your RICOH Intelligent Device can grow with you.



Smart evolution

Printers and multifunctional devices are essential business tools. We continuously develop our products, enhancing functionality and adding new features that make them ever more productive and efficient. RICOH Always Current Technology allows you to benefit from the latest enhancements without needing to upgrade from one model to another.

With RICOH Always Current Technology, you have access to the latest features and functionality supported by your device for years after the initial MFP release date.

Dynamic scalability

With RICOH Always Current Technology, the capabilities of your device can grow with your business. Our platform allows you to install new features as they become available; there is no need to call a technician or wait until the end of a contract. Updates can be downloaded directly from the RICOH Application Site or configured to be applied automatically.

You can invest with confidence in Ricoh technology, knowing that its functionality and value will grow over time.

Intelligent security

To protect your business, our devices conform to the IEEE 2600.2 Standard Protection Profile for Hardcopy Devices. And since Ricoh utilizes a specifically hardened operating system that sits at the heart of our security model, our devices do not share the vulnerabilities of other generally available operating systems. No unnecessary components are installed, root access is not available, embedded applications must pass Ricoh Compatibility Testing and be digitally signed by Ricoh before they can run on the devices' Smart Operation Panel.

With RICOH Always Current Technology updates, you can be assured that your device security is up to date.



Dynamic Workplace Intelligence



RICOH Always Current Technology is an enabler and a core part of the intelligent technological ecosystem developed by Ricoh to empower your business.

That ecosystem — Dynamic Workplace Intelligence — encompasses RICOH Intelligent Devices, RICOH Always Current Technology, Ricoh Smart Operation Panel, RICOH Application Site, RICOH Smart Integration and RICOH Intelligent Support.

Dynamic Workplace Intelligence is about connecting our capabilities and intelligently integrating Ricoh hardware, software, applications and support to build seamless workflows that meet your business needs. A smarter workplace means a more agile, capable and productive business. Dynamic Workplace Intelligence will set your team up for success, allowing your employees to focus on what they do best.

RICOH Intelligent Devices

With RICOH Intelligent Devices, you benefit from outstanding quality, reliability and security. Furthermore, you can connect your RICOH Intelligent Device to external cloud services and install workflow applications which help your employees work faster, smarter and more securely.



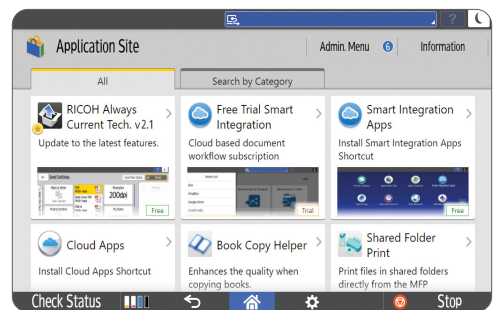
RICOH Smart Operation Panel

Unlock the full extent of your device capabilities with the user-friendly Smart Operation Panel. Its intuitive touchscreen interface mimics that of your smart device. Because it is consistent across all RICOH Intelligent Devices, it provides a uniform and easy-to-use platform.



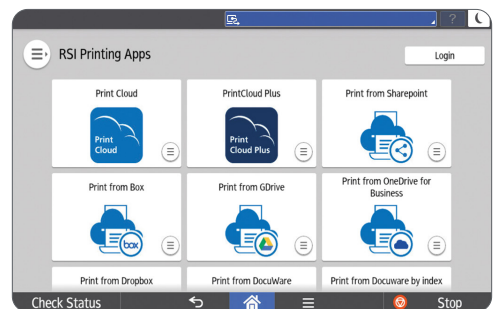
RICOH Application Site

Accessed via the Smart Operation Panel of your RICOH Intelligent Device, the RICOH Application Site allows you to download and run a variety of smart applications on your device. The apps are designed to meet specific business needs and will help streamline your workflow.



RICOH Smart Integration

RICOH Smart Integration (RSI) helps automate document workflow tasks without the capital expense of on-premises software. RSI makes it simple to print from a mobile device or easily scan to email, local folders, or cloud services (e.g., Box™, Dropbox™, Google Drive™, OneDrive® for Business, DocuWare® Cloud and more.)



RICOH Intelligent Support

Our multifaceted service and support platform provides help when it is needed. How-to videos, accessed via the Smart Operation Panel, help you complete simple tasks like toner replacement quickly and easily. We are able to provide fast support through remote access to your Smart Operation Panel, if required.



Smart updates delivered to your device

Easy automatic updates

RICOH Always Current Technology is a standard feature of the latest RICOH Intelligent Devices. Quietly supporting you, it can automatically download software updates, and much like your smartphone, it will prompt you to activate the updates at your convenience. The process is simple, secured and fast.



Simple manual control

RICOH Always Current Technology is enabled by default, but should you prefer to manually update your device, updates can be downloaded directly from the RICOH Application Site. If your device does not have internet access, your Ricoh Customer Service Engineer can install updates from an SD card.

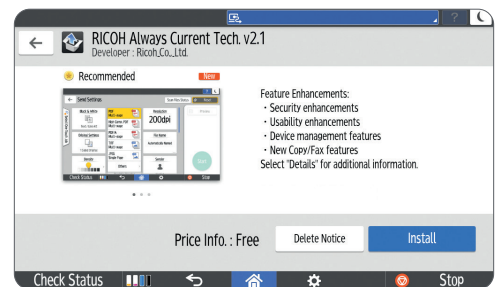
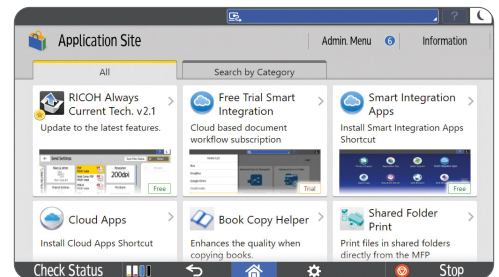
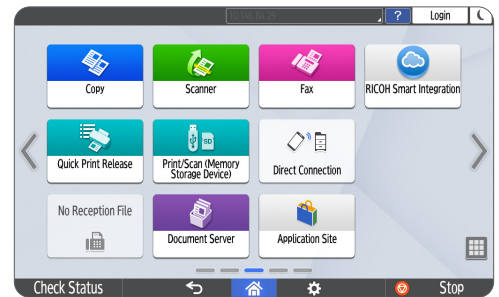
To download the latest version:

RICOH Always Current Technology was introduced with selected RICOH Intelligent Devices in early 2019. The latest version can be installed from the Application Site and offers enhancements that improve device functionality and simplify operation.

1. Navigate to the **RICOH Application Site**.
2. Select **RICOH Always Current Technology**.
3. Select **Install**.
4. When the installation is complete, your device will restart and run the latest version of RICOH Always Current Technology.*

*Restart and activation only required if firmware is not up to date

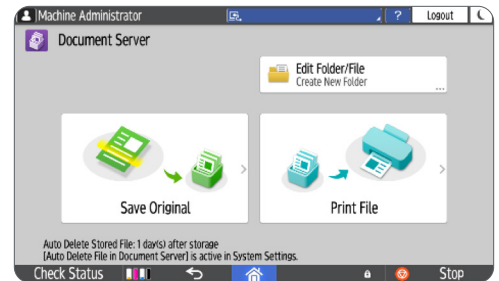
Note: Your device must be compatible with RICOH Always Current Technology, must be connected to the internet and have access to the RICOH Application Site. If your device does not meet these criteria, please contact your local Ricoh service support center.



Enhanced user features

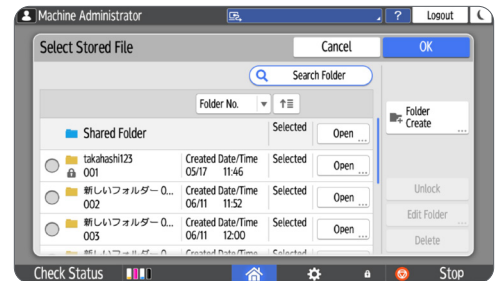
Smart UI for Document Server

The Document Server feature now has improved usability due to the new user interface. The store file function from SmartApps is now available. In addition, you can temporarily save frequently used paper documents as electronic files and access them from external devices. [V2.1](#)



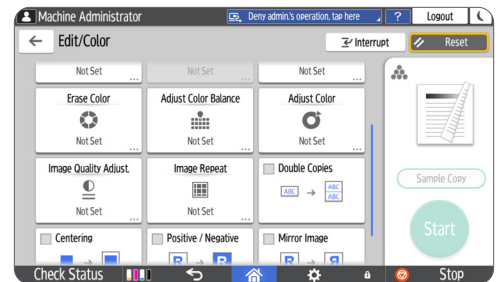
Smart UI for Store File

The Store File feature now has the new user interface, making the look and feel common with the other apps. The Store File function is now also available for the SmartApps (copy/scan/fax). [V2.1](#)



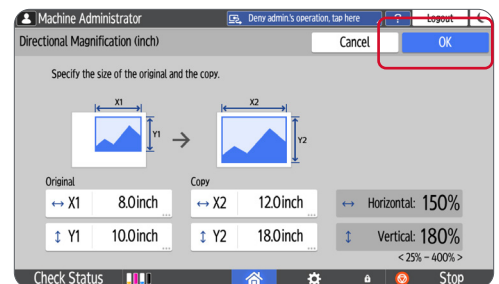
Support Smart Function for Copy Quality

More options available to adjust the image quality. [V2.1](#)



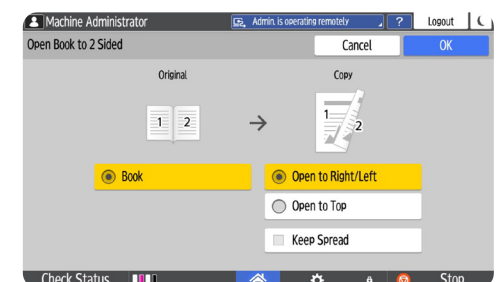
Support Smart Function for Directional Magnification

Users can enlarge or reduce along the horizontal and vertical axes independently. [V2.1](#)



Support Smart Function for Spread → 2 sided Copy

To save paper, it is possible to copy two separate originals into one double sided copy. [V2.1](#)



Enhanced user features

Prioritization Fax/Print job

The priority can now be set for fax jobs to avoid print jobs being interrupted by incoming faxes. [V2.1](#)

File name can be changed when scanning

More detailed file naming rules will be available. File name can be set as the combination of "Host name", "Login ID", "Date & Time", and Manual Entry text. [V2.1](#)

Notification widget

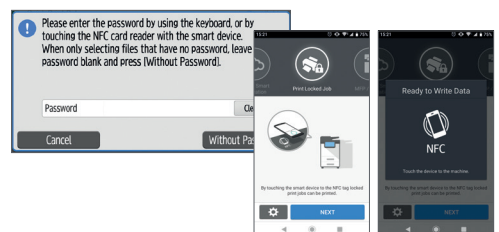
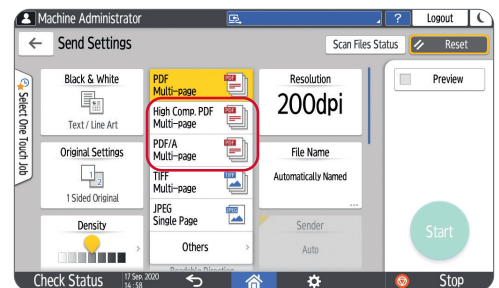
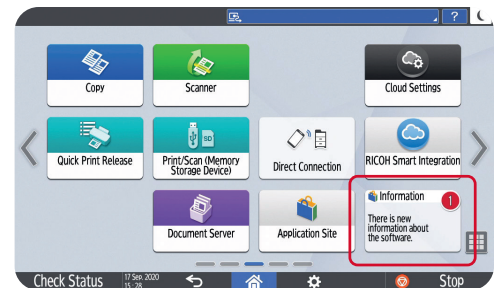
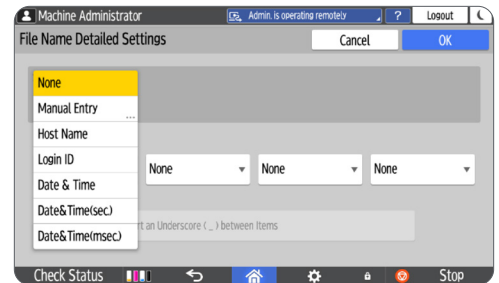
To make users aware of new applications, an information widget will appear on the home screen when a new app becomes available. There is no need to install the widget. It will appear automatically when the firmware is updated to RICOH Always Current Technology.

High Compression PDF and PDF/A

High Compression PDF and PDF/A are included as standard send options (along with PDF, TIFF and JPEG). High compression PDFs have smaller file sizes than standard PDFs. PDF/A is a standardized ISO format developed for archiving.

Print release using NFC

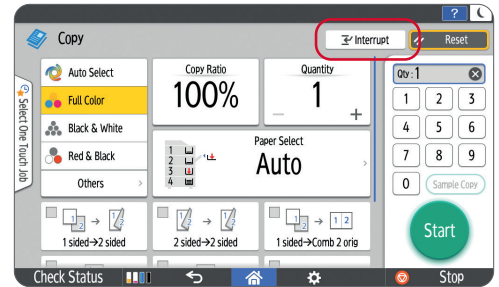
Eliminating the need to enter a password on the control panel, users can release locked print jobs using Near Field Communication (NFC) on their mobile device using the Smart Device Connector (SDC) App. (Android mobile device support only)



Enhanced user features

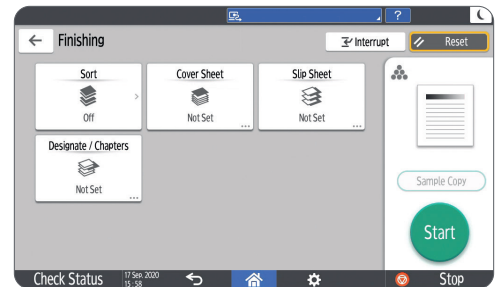
Interrupt mode (Smart Copy)

An Interrupt button is included in the Smart Copy app. The Interrupt button temporarily pauses the job in progress, allowing users to make an urgent copy of another document.



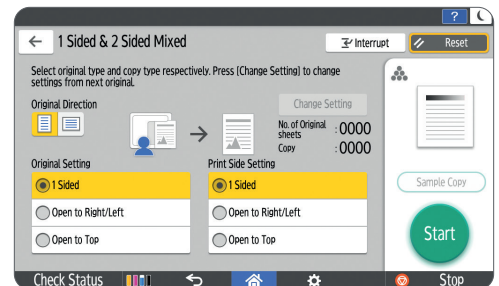
Insert cover, chapter and separation sheet (Smart Copy)

Cover, Designate/Chapters and Insert Separations Sheets are included finishing options in the Smart Copy app. The wizards simplify operation.



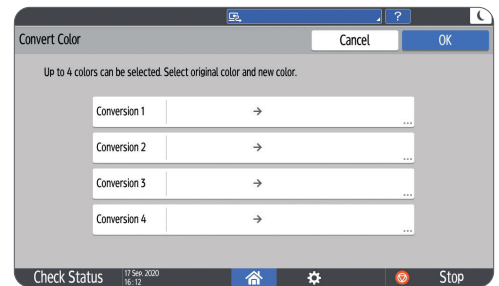
Combine mixed sided originals (Smart Copy)

The Smart Copy app has enhanced 2 Sided/Combine settings and a button which automates the combination of mixed single and double sided originals.



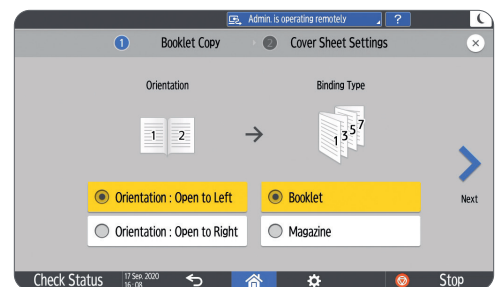
Color Overlay and Color Conversion settings (Smart Copy)

Color Overlay and Color Conversion are options in the Smart Copy app. Color Overlay enables users to apply an overlay color. Color Conversion enables users to select colors for conversion.



Booklet/Magazine settings (Smart Copy)

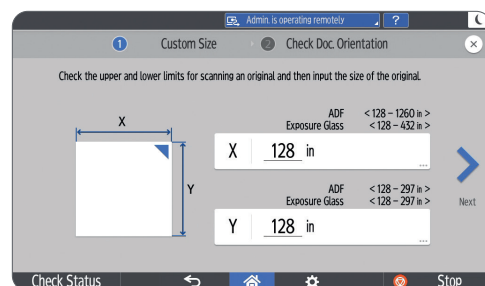
Enhanced Booklet/Magazine settings are included in the Smart Copy app. A wizard is used to select the appropriate binding settings and insert and copy onto a cover sheet, if required.



Enhanced user features

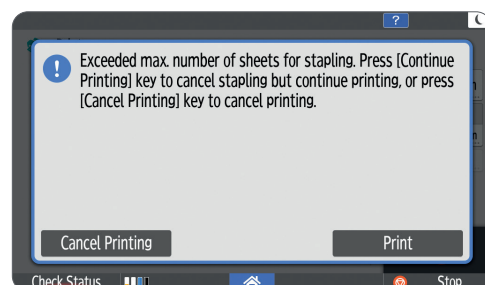
Custom sized scanning from platen glass

The custom size scanning feature makes it easier to scan and copy a custom sized section of a document.



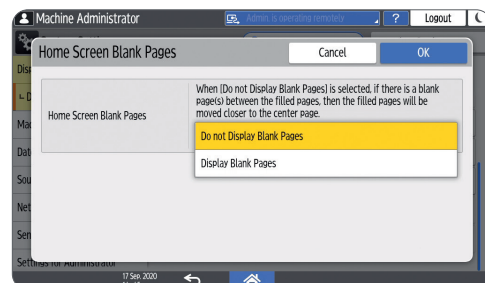
Print cancellation when stapling limits exceeded

To reduce waste, if the maximum staple limit is exceeded, the device will alert the user and pause the job before it is printed. The user is given the option to cancel printing or continue without stapling.



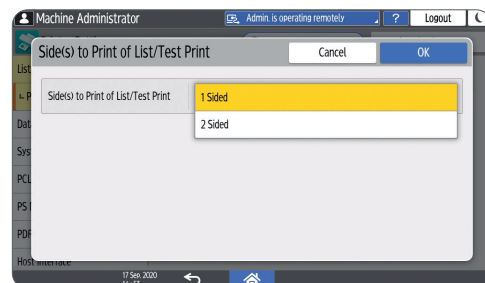
Suppress blank screen

To avoid seeing blank (empty) home screen pages, users can choose to hide or display blank pages.



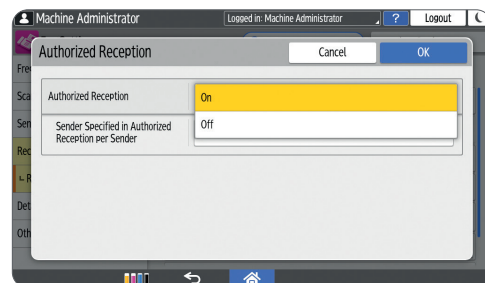
Configuration sheet print settings

To minimize paper consumption, configuration sheets can be printed double sided. 1-sided or 2-sided output can be selected under List/Test Print in printer settings.



Prevent unwanted faxes

It's simple to prevent unwanted fax reception. Unwanted senders can be blocked by selecting fax numbers directly from the fax reception history, instead of manually entering numbers.



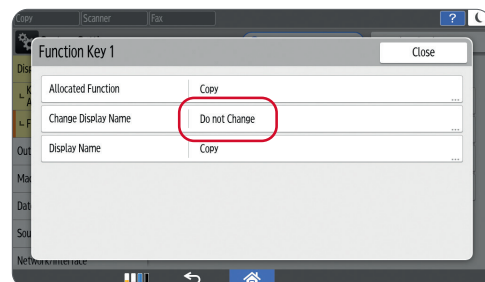
Enhanced user features

Fax communication records

You can change the frequency for when you receive an e-mail with the fax logs. You can receive this email after 50, 200 or 1,000 faxes.

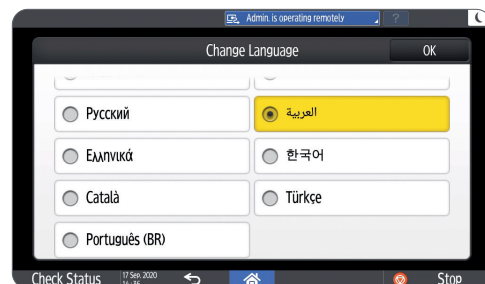
Function key language

The administrator can determine whether the language of the main function keys (Copy, Scanner and Fax) changes when the language of the Smart Operation Panel is changed.



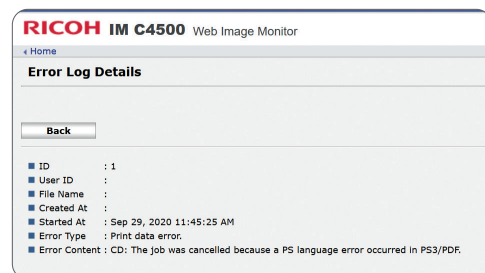
Multi-language support

Over 20 different language options are supported, including English, Spanish, Chinese and Arabic. The user can select their language choice directly from the Smart Operation Panel without needing administrator rights.



Print error reporting

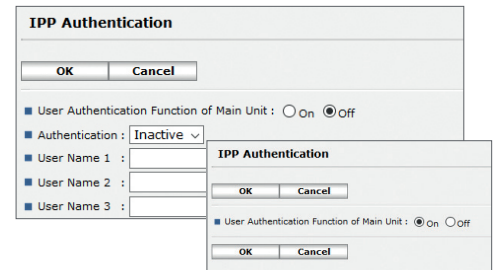
When a job is cancelled by the device, the error code is analyzed and the cause is recorded in the error log. The details are displayed to encourage the user to resolve the issue.



Enhanced IT features

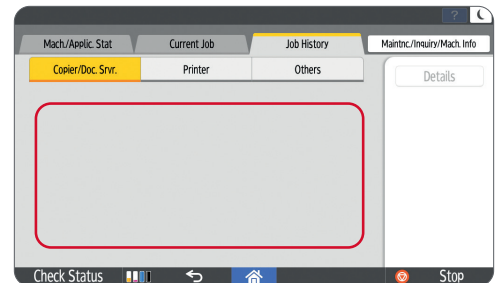
Print jobs submitted via IPP

To improve security when printing from mobile devices, IPP authentication is supported.



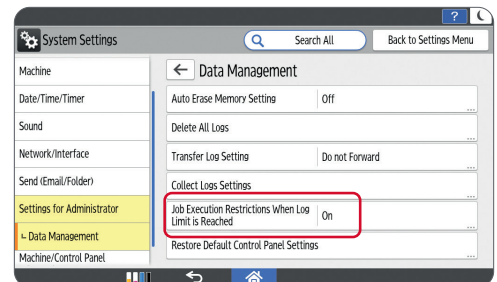
Error log protection

To protect personal information security, error log information is protected and only visible to users with administrator rights.



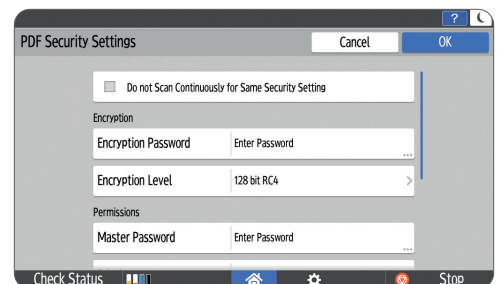
Data log job restrictions

To protect the integrity of the job log, it is possible to restrict job execution when the job log is full. When this setting is enabled, the device will stop printing and alert the administrator and user when the job log is full.



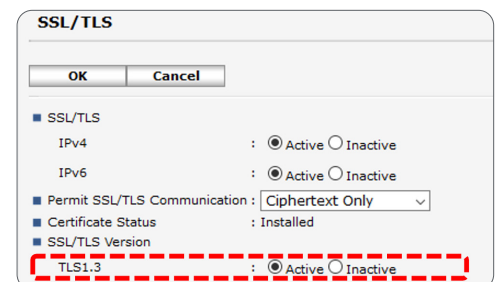
Reset file password after transmission

To prevent password errors and ensure that protected files can be opened, it is possible to reset scanned file passwords after transmission.



End-to-end print encryption

To protect data from malicious attack and ensure end-to-end security, print data can now be encrypted using TLSv1.3.



Enhanced IT features

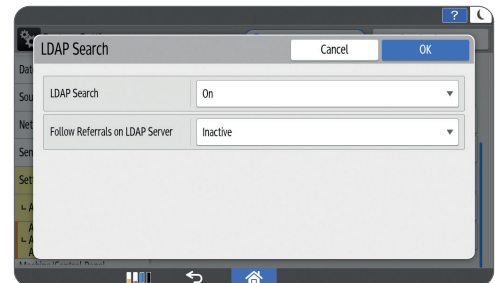
SHA-2 support on SNMPv3

To meet enhanced government security requirements, SHA-2 (224, 256, 384, or 512-bit digests) is available for cryptographic hashing.



LDAP search improvement

To minimize LDAP search delays and associated failures, the enhanced LDAP search feature includes an additional setting intended to decrease search delays.



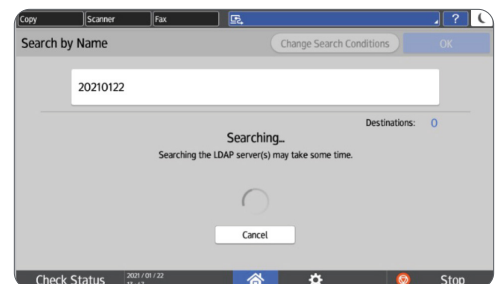
Search Address Book

You can search for a destination in the address book of the machine and LDAP servers at the same time.



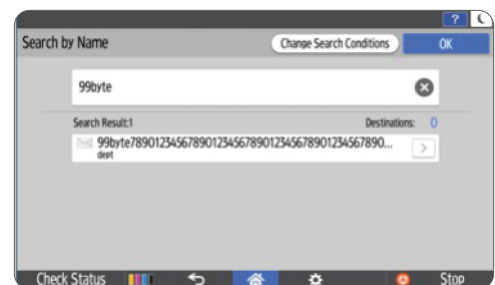
Interrupt Search

You can interrupt a search in all search methods.



Display in the search result

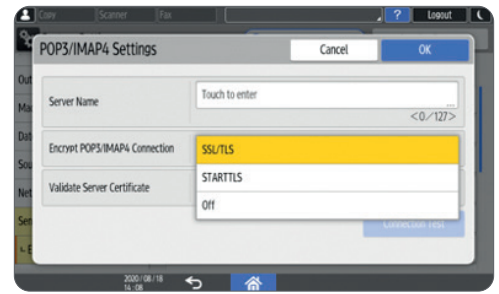
Up to 100 characters are displayed in the search results list to make it easier to find the destination, increasing smooth searching and browsing through the search results.



Enhanced IT features

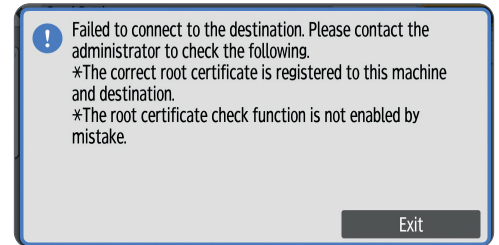
Secured internet fax connection

The POP3/IMAP4 encryption includes SSL/TLS. Customers using internet fax with Microsoft 365 (Office 365) and G Suite can apply a secured SSL/TLS connection.



Root certification error

The wording of the root certification error notice makes it easier for the user to understand and resolve errors.



Batch change security settings

To eliminate the need to change/reinstate security settings manually at multiple individual devices, system administrators can apply a remote global change to the following settings: user login, password and SNMPv3 account.

Batch change network protocols

To eliminate the need to change network protocol settings manually at multiple devices, system administrators can apply a remote global change to the following settings: encryption strength, WSD (Encrypted Communication of Device) IPv4, NetBIOS over TCP/IPv4, Enable IPP Port 80 IPv4, IPP Port 80 IPv6, WSD (printer) IPv6, WSD (Scanner) IPv6, IPP (Port 631) IPv6, Permit SNMPv3 Communication, IPv4 and IPv6.

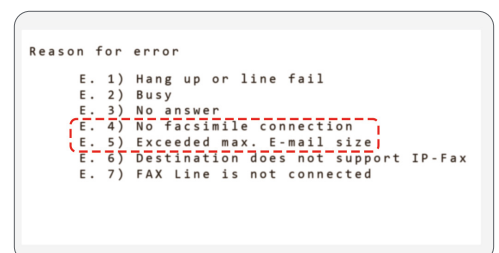
Update firmware by web service

You can update the firmware in secure environments using HTTP/HTTPS.

Note: The feature will be available once SLNX v3.5 is released.

Error terminology improvements for FAX reports

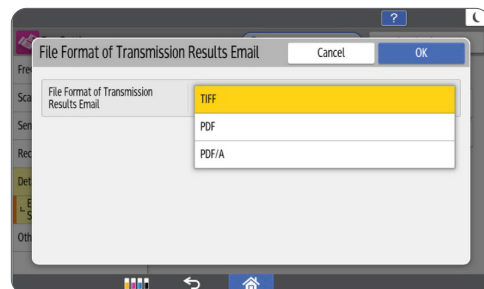
The reason for errors in Fax reports are detailed and easy to understand. You can easily find out the cause of the fax error without contacting the call center.



Enhanced IT features

The file format of the transmission result report in FAX

You can output other file formats besides TIFF for the transmission result report. You can choose from PDF, PDF/A or TIFF. Enjoy the convenience of confirming fax transmission results not only from a PC but also from your smartphone.



Integrated Windows Authentication in SMTP Authentication

You can use the Integrated Windows Authentication (NTLM) as an authentication method for the SMTP server and for enhanced security. It also makes scanning to email much easier.

Note: When the SMTP server uses Integrated Windows Authentication as the authentication method, please select "On" using the following workflow: System settings > Send (Email/Folder) > Email > SMTP Authentication > Encryption.



Scan to learn more about RICOH Always Current Technology or speak to your sales professional.

RICOH Always Current Technology and/or other Ricoh updates are not available for all models and may be limited based on manufacture date or other limitations. If a model does support RICOH Always Current Technology, some updates may not be supported if the engine lacks the capability. Please consult with your sales representative if you want to take advantage of features beyond the capability of your current device. Specifications and external appearance are subject to change without notice. The color of the actual product may vary from the color shown in the brochure. The images in this brochure are not real photographs and slight differences in detail might appear.

RICOH Always Current Technology v2.1, released June 2022.

Ricoh USA, Inc.

300 Eagleview Boulevard
Exton, PA 19341

For further information contact us at:



1-800-63-RICOH



www.ricoh-usa.com

