

RICOH Transforms Suite

Document conversion solutions

Transforming legacy print streams into responsive, accessible, web-optimized formats



RICOH
imagine. change.

Convert your legacy print data easily and at scale

RICOH Transforms Suite is a set of modular solutions that modernize legacy print data and workflows by converting older formats such as AFP, PCL, PostScript, Line, and TIFF into fully searchable PDFs, and by using tools like AFP Merge and AFP Visual Environment to merge, enhance, and optimize AFP data streams. These individually orderable solutions reduce the need for major IT projects or manual conversion, support mobile, web, and cloud delivery, help meet digital accessibility requirements, and preserve document structure.

- **Reduce printing and mailing costs** through electronic delivery
- **Enable fast search and navigation** in multi-page PDFs
- **Accelerate ROI** with minimum deployment effort across platforms



Seamless Legacy Data Stream Transformation

Streamline the modernization of your legacy print data streams, such as APF, PCL, Postscript, and Line data, by converting them into accessible, searchable PDFs. Preserve data integrity, ensure compliance, and enable long-term archiving and easy distribution with no need for custom coding or major infrastructure modifications.



Scalable Accessibility & Compliance

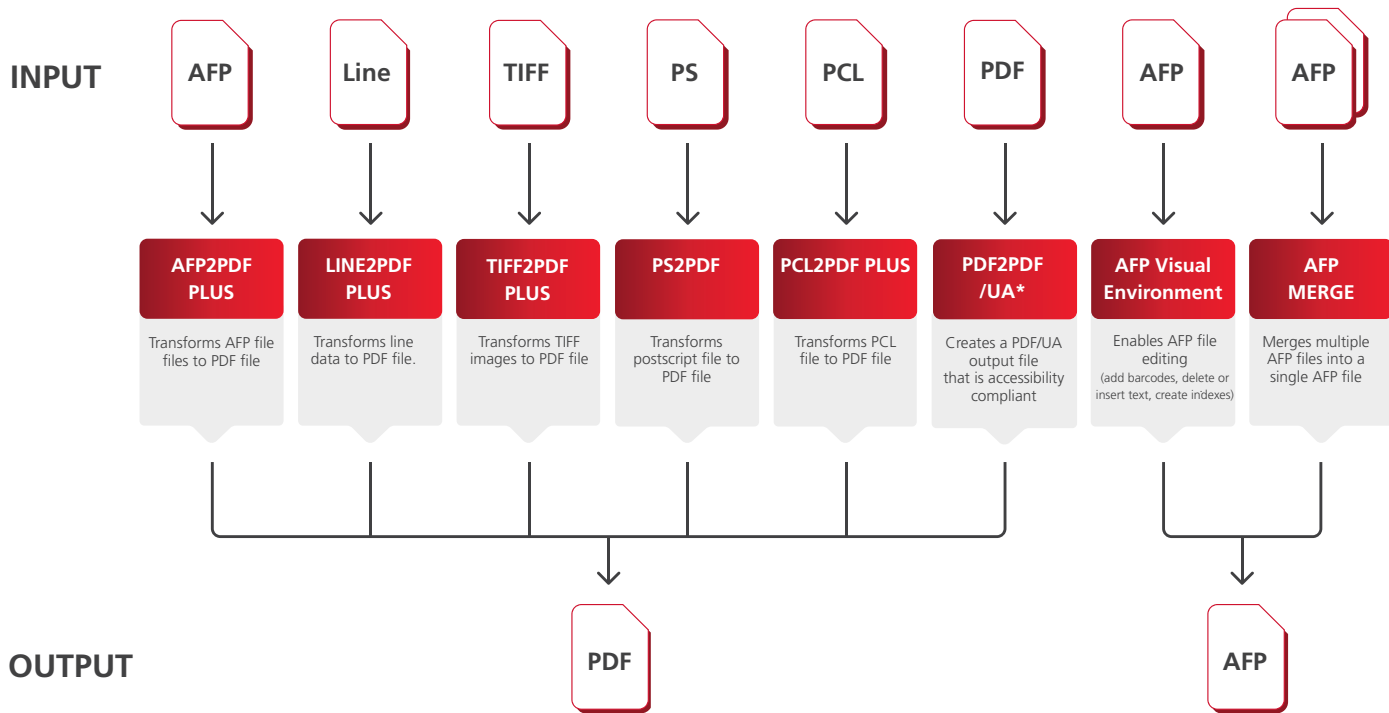
Delivers PDF outputs that meet PDF/UA standards for archival compliance, with support for encryption, linearization, and digital signatures to enhance security and usability.



Robust Performance Control

Manage high-volume processing with client/server architecture, supporting files over 2GB and integration with systems like IBM Content Manager OnDemand for optimized workflows.

Modular, web-optimized & accessible PDFs at your finger tips

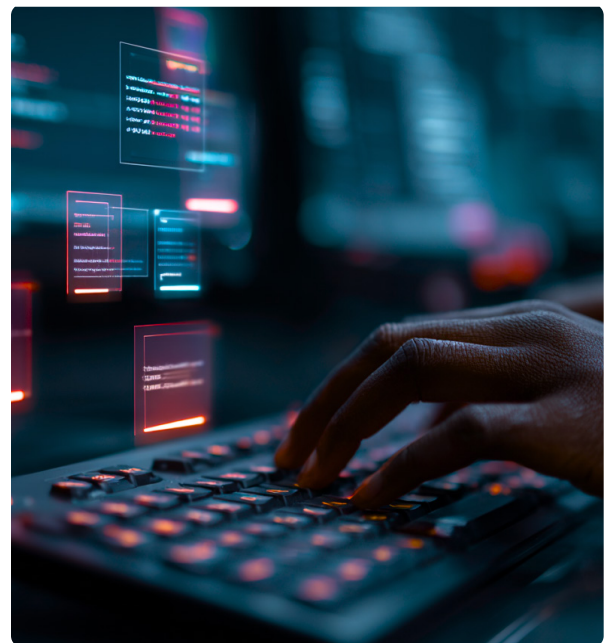


* RICOH Accessibility Designer is a Professional Services tool that works with RICOH PDF2PDF/UA (Universal Accessibility) to generate control files, helping organizations produce PDF/UA-compliant PDFs at scale. Customer can either purchase the tool or engage Ricoh Professional Services to create the control files for them.

Bridge the gap between legacy data streams

RICOH Transforms Suite builds on proven legacy data-stream technologies originally developed for IBM Content Manager OnDemand to bridge the gap between legacy print streams and modern document workflows.

Launched by Ricoh in 2011 and consistently enhanced through partnerships with industry leaders and clients, the suite continues to streamline document conversion and retrieval processes.





RICOH Transforms Suite **Next Steps**

Connect with your Ricoh sales representative to request a complimentary demonstration or trial to discover how RICOH Transforms Suite can modernize your data streams.

Visit www.ricoh-usa.com for more information.

RICOH
imagine. change.

Ricoh USA, Inc., 300 Eagleview Blvd, Exton, PA 19341, 1-800-63-RICOH.

©2026 Ricoh USA, Inc. All rights reserved. Ricoh® and the Ricoh logo are registered trademarks of Ricoh Company, Ltd. All other trademarks are the property of their respective owners. This document is for informational purposes only and this document and any related services or products described herein are not intended to provide any legal, regulatory, compliance, or other similar advice. You are solely responsible for ensuring your own compliance with all legal, regulatory, compliance, or other similar obligations. While care has been taken to ensure the accuracy of this information, Ricoh makes no representation or warranties about the accuracy, completeness or adequacy of the information contained herein, and shall not be liable for any errors or omissions in these materials. Actual results will vary depending upon use of the products and services and the conditions and factors affecting performance. The only warranties for Ricoh products and services are as set forth in the express warranty statements accompanying them.