

RICOH
imagine. change.

Digital full colour multifunction printers

IM C2510

IM C3010

IM C3510

IM C4510

IM C6010

IM C7010

Printer Copier Scanner Fax



IM C2510



25 ppm

IM C3010



30 ppm

IM C3510



35 ppm

IM C4510



45 ppm

IM C6010



60 ppm

IM C7010



70 ppm

Intelligent devices that unlock powerful results

The office landscape has changed tremendously in the last few years. As more companies adopt hybrid and borderless work, digital workflows are opening up new possibilities for better information sharing, in-office space optimization, efficiency, and cost-effective operations.

At the same time, the need for more robust IT and print infrastructure, including improved software and hardware solutions to address security challenges, has emerged — and the pursuit of responsible environmental stewardship has never been more important.

Ricoh's latest IM C Series models are tailored to support businesses like yours in optimizing a digitally-enabled workplace with technology designed to enhance productivity and protect your data. These intelligent devices lead the market in environmental performance and easily scale to adapt to your changing business needs. They also provide employees an enhanced experience with a simple-to-use interface, the ability to create high-quality colour output on-demand at a reasonable cost, and the versatility to easily transition between paper and digital workflows.

The IM C Series has everything you need to capture, print, connect, and keep your information secured to unlock powerful results and build the ideal hybrid print infrastructure for your business.



Support your sustainability goals with leading Typical Electricity Consumption (TEC) values and devices made of more recycled plastic



Protect your business's data and intellectual property



Get the latest device technology and customization options to match your needs



Work more efficiently with improved usability and productivity





Designed for your workplace today — and tomorrow

Today, the need for a seamless print infrastructure is an essential part of a successful digital workplace strategy to support employees wherever they are.

With Ricoh's intelligent devices, you can digitize your document workflows and gain fast and secured access to your information when needed. With standard copy, print, and scan capabilities, you can customize your device by adding software solutions, apps, and cloud services to support every stage of your business growth.

The newest generation of the IM C Series offers users a seamless experience and great results. From brilliant colour output to enhanced data security, scanning, and paper handling, these devices will help you elevate the way work gets done.

The new benchmark in sustainability

As an industry leader in environmental performance, we make a difference not just through our own commitments, but by supporting your targets, too. We help you save energy and minimize your environmental footprint and have also added enhanced scanning features to promote more digital workflows that help reduce paper consumption and waste.

More energy savings

Toner fixing, the process of fusing toner onto paper, accounts for up to 70% of a printer's energy consumption. Our innovative IM C Series offers significantly lower energy usage through a new toner that fuses at a lower temperature. Power consumption during Sleep Mode has been reduced to help you achieve a smaller carbon footprint and lower costs.

More recycled plastic

Designed for sustainability across its lifecycle, the new IM C Series incorporates the use of 50% post-consumer recycled plastics, while PET toner bottles are produced from 100% recycled plastics. Single-use plastics reduced 54% due to more sustainable packaging materials and the removal of excess packaging.

Supporting a circular economy

The new IM C Series is designed to help reduce environmental impacts at each stage of the product lifecycle — from production, usage, and end-of-life collection and recycling.



Reliable protection of your data

Hybrid work has enabled new ways of employee collaboration and created opportunities for increased mobility, efficiency and flexibility. Inevitably, it also raises challenges when it comes to protecting intellectual property and sensitive data. Our IM C Series help you mitigate risk by placing the most advanced security technologies right at your fingertips. Built with the latest operating system, these new devices integrate a new admin management system and Ricoh's Always Current Technology for extra peace of mind.

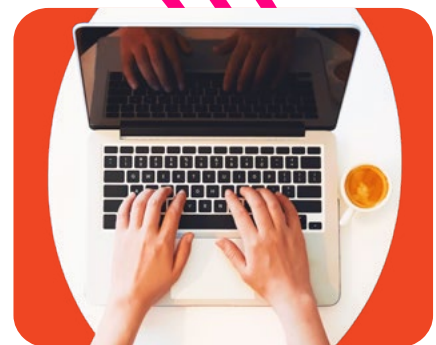
Enhanced privileged account control

This feature gives you more freedom when creating MFP administrator roles. The number of admins is no longer limited to just four, eliminating risks related to sharing IDs. You can assign different privileges to each role and link it to your user ID system, including Windows and LDAP platforms.



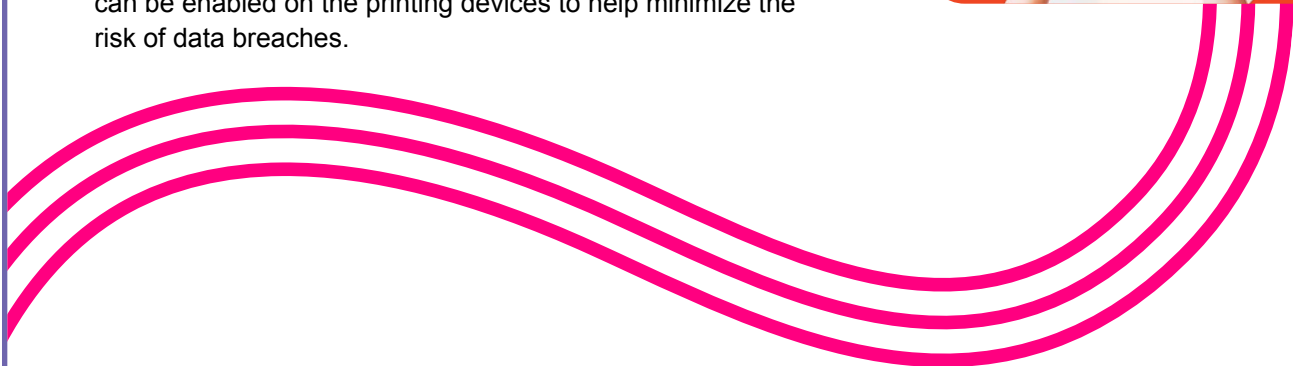
Trusted platform module support

The new IM C Series incorporates the latest version (2.0) of Trusted Platform Module (TPM) as standard. Stronger technology improves encryption strength and protects important data such as passwords and encryption keys stored in the device.



Multi-factor authentication

With optional components, multi-factor authentication (MFA) can be enabled on the printing devices to help minimize the risk of data breaches.



Technology that evolves with you

As your business grows, you need the right technology to take advantage of new opportunities. And as your digital transformation progresses, you need the right partner to help you stay ahead. Along with Ricoh's trusted quality and technical expertise, our eco-friendly intelligent devices can scale along with your business needs — and deliver value as your business grows. Underpinned by a secured cloud infrastructure, the IM C Series offers customization, flexibility, and reliable security and service updates that are just a download away.

Scalable and customizable

Discover the freedom of smart scalability. With the new IM C Series, you have the flexibility to tailor your device to suit your business needs. Simply download the latest features and upgrades as you need them. Add software solutions, applications, cloud services and customize your device. With the right digital workflow solutions, you can help your employees work faster, smarter, and more securely at every stage of your business growth.

Automatic security and software updates

Forget the days of buying a new device, waiting until the end of your contract, or contacting a technician every time you need updated technology. With Ricoh's Always Current Technology, new features, applications, and security updates can be downloaded and installed directly to your device on request, keeping you up to date with the latest versions and avoiding downtime.

RICOH Smart Integration (optional) and Smart Device Connector

Ricoh's Smart Integration allows you to personalize and enhance the capabilities of your IM C Series device with applications and solutions readily available from the cloud. The free Smart Device Connector app facilitates connecting mobile devices securely to your device, allowing users to easily scan, print, copy, and share documents from their smartphones and tablets. Save time, improve productivity and automate repetitive document workflow tasks with the push of a button. Now you can quickly route your documents to the right place, in the right format and with the right file name.

RICOH Streamline NX® (optional)

Ricoh's Streamline NX is a powerful suite of scalable, integrated document management applications and tools that allow you to implement standardized intelligent solutions in every office, globally. Streamline NX can also simplify device and document management tasks such as administration and reporting, user authentication, and more to help you cut operational costs, improve security and compliance, and make process improvements.

RICOH CloudStream (optional)

Ricoh's CloudStream allows you to manage your print infrastructure with ease. It is an all-in-one hybrid print platform that enables companies of all sizes to benefit from the agility and innovation of cloud technology. Streamline your print infrastructure, eliminate print servers, and reduce your IT burden with this cost-effective SaaS solution.

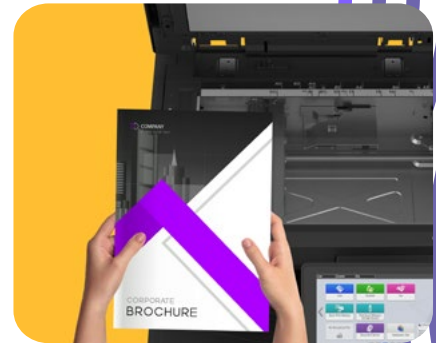


Enhanced quality, access, and productivity across digital and print

The IM C Series is designed to create the ultimate user experience, with features that save time and increase efficiency. Its digital technologies give you the power to streamline workflows — making processes smoother and more efficient while encouraging better collaboration. New peripherals enhance paper handling while upgraded hardware ensures quick, reliable performance. The enhanced user interface features a simple and easy-to-use operating panel, making the new IM C Series an excellent hub for your information management needs.

Optimized scanning features

With a combination of powerful scanning functions and an intuitive user interface, daily scanning and copying routines are easier than ever before. High-quality and high-speed scanning makes it possible for employees to share files quickly and seamlessly.



Third-generation Smart Operation Panel (SOP)

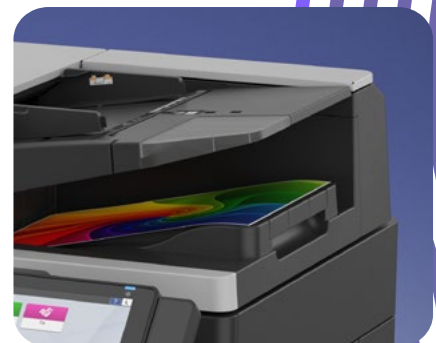
Our familiar, user-friendly operation panel has been enhanced for an even more intuitive and enjoyable experience. Brightness, touch sensitivity and position detection have all been enhanced for optimal access to the device's many resources and functions.

- Upgraded OS for better security and usability
- Integrated card reader cover option
- Greater touch sensitivity
- Tilttable for better visibility and accessibility



New efficiencies in paper handling

New peripherals, including wide media handling and finishing options, allow for the creation of a broad variety of sophisticated marketing materials such as brochures, booklets, and presentations in-house. The new single-pass document feeder scans two-sided documents in one pass and is built to handle high scan/copy volumes, smaller-sized and special paper types.



Find your perfect fit – meet the new generation of IM C Series intelligent devices

The new IM C Series combines a simple and sophisticated design with strong technical capabilities to match your way of working. Take a closer look.

IM C2510

An intelligent multifunction device built for your modern office and workstyle

- Prints up to 25 ppm, copy, scan, fax (optional)
- 1200 x 1200 dpi max print resolution
- Paper capacity up to 2,300 pages
- Embrace a suite of multifunction capabilities for a competitive edge



IM C3010/IM C3510

An intelligent multifunction device that keeps pace with how business gets done today

- Prints up to 30 or 35 ppm, copy, scan, fax (optional)
- 1200 x 1200 dpi max print resolution
- Paper capacity up to 4,850 pages
- Engineered to work the way you do work today and tomorrow



IM C4510/IM C6010/IM C7010

With impressive speed and productivity, this intelligent multifunction device helps keep your business moving

- Prints up to 45, 60 or 70 ppm, copy, scan, fax (optional)
- 1200 x 1200 dpi max print resolution
- Paper capacity up to 4,850 pages
- Keep your teams in sync, even on the go



All models shown with optional accessories



IM C2510/IM C3010/IM C3510/IM C4510/IM C6010/IM C7010

MAIN SPECIFICATIONS

	IM C2510	IM C3010	IM C3510	IM C4510	IM C6010	IM C7010
GENERAL						
Warm-up time	24 seconds	25 seconds	25 seconds	24 seconds	24 seconds	24 seconds
First output speed: B/W	4.5 seconds	4.0 seconds	4.0 seconds	3.2 seconds	2.4 seconds	2.2 seconds
First output speed: full colour	7.0 seconds	6.6 seconds	6.6 seconds	5.2 seconds	3.8 seconds	3.7 seconds
Continuous output speed	25 ppm	30 ppm	35 ppm	45 ppm	60 ppm	70 ppm
Memory: standard	6GB	6GB	6GB	6GB	6GB	8GB
Storage: standard	256GB Solid State Drive (SSD)					
SPDF capacity	220 sheets					
Weight	96.1 kg / 211.9 lbs.	99.3 kg / 218.9 lbs.	99.3 kg / 218.9 lbs.	100.8 kg / 222.2 lbs.	100.8 kg / 222.2 lbs.	106 kg / 233.7 lbs.
Dimensions:WxDxH	23.1" x 27.6" x 37.9" (587 mm x 701 mm x 963 mm)					
Power source	120V-127V, 60Hz					
COPIER						
Multiple copying	Up to 999 copies					
Resolution	600 dpi					
Zoom	From 25%-400% in 1% increments					
PRINTER						
CPU	Intel Apollo Lake 1.3 GHz	Intel Apollo Lake 1.3 GHz	Intel Apollo Lake 1.3 GHz	Intel Apollo Lake 1.6 GHz	Intel Apollo Lake 1.6 GHz	Intel Apollo Lake 1.6 GHz
Printer language: standard	PCL5c Emulation, PCL6, PostScript®3™ Emulation, PDF Direct Print Emulation					
Printer language: option	Genuine Adobe® PostScript®3™, Adobe® PDF Direct Print					
Print resolution: maximum	Up to 1200 x 1200 dpi					
Network interface: standard	Ethernet 10 base-T/100 base-TX/1000 base-T, USB Host I/F Type A, USB Device I/F Type B					
Mobile printing capability	Apple AirPrint™, Mopria, Ricoh Smart Device Connector					
Windows® environments	Windows 10/11; Windows Server 2016/2019/2022/2025					
Mac OS environments	macOS v12 or later					
Other supported environments	IBM iSeries AS/400-using OS/400 Host Print Transform					
SCANNER						
Scanning speed: SPDF	150 ipm (simplex)/300 ipm (duplex)					
Resolution: maximum	Up to 1200dpi					
Compression method File Formats	Single Page: TIFF, JPEG, PDF, PDF/A, High Compression PDF, encryption PDF, Searchable PDF (Option required) Multi Page: TIFF, PDF (Default), PDF/A, High Compression PDF, encryption PDF, Searchable PDF (Option required)					
Scan destination types	E-mail, Folder, USB, URL, FTP					
FAX (Optional)						
Circuit	PSTN, PBX					
Transmission speed	3 seconds					
Modem speed: maximum	33.6 Kbps					
Resolution: standard	8x3.85 line/mm, 200x100 dpi					
Maximum Resolution: option	16x15.4 line/mm, 400x400 dpi					
Compression method	MH, MR, MMR, JBIG					
Scanning speed	94 spm					
Memory: standard	4 MB (320 pages)					
Memory: maximum	60 MB (4,800 pages)					
PAPER HANDLING						
Recommended paper size	1st Paper Tray: 8.5" x 11" (A4) 2nd Paper Tray: 5.5" x 8.5"- 12" x 18" (A3-A6, B4-B6), Envelopes Bypass: Up to 12" x 18", Custom sizes: Width:3.5" - 12.6" (90 - 320 mm), Length: 5.8" - 49.6" (148 - 1260mm)					
Paper input: standard	1,200 sheets (2 x 550 sheets+ 100-Sheet Bypass Tray)					
Paper input: maximum	2,300 sheets	4,850 sheets	4,850 sheets	4,850 sheets	4,850 sheets	4,850 sheets
Paper output: standard	500 sheets 8.5" x 11"(A4) or smaller; 250 sheets 9.8" x 13.9" (B4) or larger					
Paper output: maximum	1,625 sheets	1,625 sheets	1,625 sheets	3,625 sheets	3,625 sheets	3,625 sheets
Paper weight	Standard Trays: 16 - 80 lb. (60 - 300 g/m ²) Bypass Tray: 14 - 80 lb. (52 - 300 g/m ²)					
	Duplex Unit: 14-45 lb. (52-169 g/m ²)	Duplex Unit: 14 - 68 lb. (52 - 256 g/m ²)	Duplex Unit: 14 - 68 lb. (52 - 256 g/m ²)	Duplex Unit: 14 - 68 lb. (52 - 256 g/m ²)	Duplex Unit: 14 - 68 lb. (52 - 256 g/m ²)	Duplex Unit: 14 - 68 lb. (52 - 256 g/m ²)
Paper types	Plain, Recycled, Special, Coloured, Letterhead, Cardstock, Pre-printed, Coated, Envelope, Label, Gloss					

IM C2510/IM C3010/IM C3510/IM C4510/IM C6010/IM C7010

MAIN SPECIFICATIONS

	IM C2510	IM C3010	IM C3510	IM C4510	IM C6010	IM C7010
ENVIRONMENTAL FEATURES						
Power consumption: maximum	Less than 1,584 W					
Power consumption operation: B&W	462 W	473 W	488 W	582 W	748 W	905 W
Power consumption operation: Full colour:	509 W	522 W	549 W	672 W	876 W	1019 W
Power consumption: ready/sleep	40.9 W / 0.3 W	46.2 W / 0.3 W	46.2 W / 0.3 W	47.2 W / 0.3 W	47.2 W / 0.3 W	54.2 W / 0.29 W
TEC*	0.25 kWh / week	0.30 kWh / week	0.35 kWh / week	0.45 kWh / week	0.69 kWh / week	0.81 kWh / week

* It is a reference value based on the ENERGY STAR Ver.3.0 test method.

CONSUMABLES

Toner (black)	16,500 prints	31,000 prints	31,000 prints	42,000 prints	42,000 prints	42,000 prints
Toner (cyan/magenta/yellow)	10,500 prints	19,000 prints	19,000 prints	28,000 prints	28,000 prints	28,000 prints

Consumable yields based on 5% coverage on A4 paper.

PAPER SUPPLIES AND FINISHER OPTIONS

2x 550-sheet paper tray, 2,000-sheet Large capacity tray, 1,650-sheet Side large capacity tray, 1,000-sheet Hybrid finisher, 1,000-sheet Booklet finisher, 500-sheet Internal finisher, Internal shift tray, One-bin tray, 3,000-sheet finisher (IM C4510/IM C6010/IM C7010 only), 3,000-sheet booklet finisher (IM C4510/IM C6010/IM C7010 only), Stapleless Unit (3,000-sheet finishers only)

OTHER OPTIONS

Fax unit, G3 Interface, Fax memory unit, Cabinet, Stapleless unit, Punch units, Internal Multi-fold unit, Genuine Adobe PostScript(R) 3, IEEE 802.11 a/b/g/n/ac wireless interface, Device Server Option (second Ethernet port), OCR unit, Enhanced Security SSD, Counter I/F unit, Card Reader Cover, IPDS unit, Fiery Color Controller, Fiery Impose, Fiery Compose, Fiery ColorRight Package, Fiery Automation Package, Fiery Color Profiler Suite, ES-3000 spectrophotometer, Fiery ColorGuard, IQ Manage, Fiery JobFlow

This device does not support PoE (Power over Ethernet) and should not be connected to a PoE hub. Connecting to a PoE hub could cause damage and void warranty coverage.

Some options may not be available at the time of market release.

Specifications are subject to change without notice.

For maximum performance and yield, we recommend using genuine Ricoh parts and supplies.

Some features may require additional options and/or charges.



Enable seamless digital workspaces with a scalable print infrastructure

Transform your workspace and empower your team with smart devices that maximize collaboration, streamline digital workflows, and enhance printing capabilities.

Ricoh's newest generation of the IM C Series scales with your needs and has everything you need to capture, print, connect, and keep your information secured to unlock powerful results, and build the ideal hybrid print infrastructure for your business.

Contact us today to learn more.

Ricoh, a trusted partner

At Ricoh, we're empowering our customers to respond to our changing world with actionable insights. We believe having access to the right information translates to better business agility, more human experiences, and the ability to thrive in today's age of hybrid and borderless work. Through our people, experience, and solutions, we create competitive advantage every day for over 1.4 million businesses around the globe. To us, there's no such thing as too much information.



RICOH
imagine. change.

www.ricoh.ca

Ricoh Canada Inc., 100-5560 Explorer Drive, Mississauga, ON L4W 5M3, 1 888 742-6417

©2026 Ricoh Canada Inc. All rights reserved. Ricoh® and the Ricoh logo are registered trademarks of Company, Ltd. All other trademarks are the property of their respective owners. The content of this document, and the appearance, features and specifications of Ricoh products and services are subject to change from time to time without notice. Products are shown with optional features. While care has been taken to ensure the accuracy of this information, Ricoh makes no representation or warranties about the accuracy, completeness or adequacy of the information contained herein, and shall not be liable for any errors or omissions in these materials. Actual results will vary depending upon use of the products and services, and the conditions and factors affecting performance. The only warranties for Ricoh products and services are as set forth in the express warranty statements accompanying them.