

Continuous Feed Inkjet Presses

# RICOH

## Pro VC70000/ Pro VC70000e

**RICOH**  
imagine. change.



Pro VC70000e

492  
fpm full-color

Pro VC70000

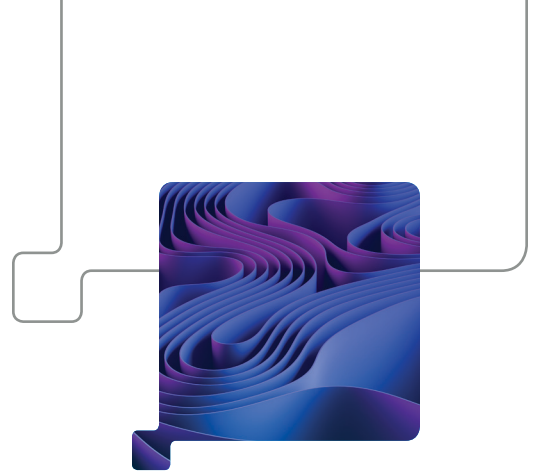
492  
fpm full-color

# The **expertise** of Ricoh.

Since 1973 our relentless pursuits in innovation have made us an invaluable partner for many businesses across the commercial printing industry. It is our cumulative experience paired with an unparalleled network of solution architects, software developers, master engineers, administrators, business consultants and project managers that give us the ability to assess, recommend and implement the most effective processes, workflow and support for your business.

With future-forward products and expert professional services,  
**we help you get the most out of your inkjet investment.**





# Smart, scalable and built to **future proof your business.**

You've got the vision to take your business farther. You see the trends in the marketplace. You know the growth opportunities of continuous feed inkjet technologies. Personalization, customized runs, faster turnaround times and print-on-demand capabilities. Your customers are asking for high-quality, image driven, best-in-class marketing materials, publishing applications and direct mail programs. And you want to deliver.

**The RICOH Pro VC70000 and the RICOH Pro VC70000e Continuous Feed Inkjet Presses were built to realize your vision of creating cutting-edge results, in real time.**

- Extended gamut pigment inks allow higher coverage on lightweight papers for color-intensive applications.
- Optional proprietary pre-coating technology enables expanded print quality on both coated and uncoated stocks.
- Smart Start features automate and execute press make-ready tasks before your workday even begins.
- Patented drying technologies make exceptional quality possible on offset coated stocks.
- AI-powered closed-loop web inspection system proactively monitors conditions and improves system settings, without operator involvement.
- Intelligent monitoring tools provide insight into device utilization and operator productivity.
- Dynamic drop technology at the pel level renders fine details and consistent half-tones while optimizing ink usage.
- Ricoh Gen5 Piezo stainless steel, industrial grade printheads ensure longevity and reliable performance.
- Repeatable print length of up to 54" produces posters, brochures and book jackets.
- Supports third-party finishing for complete end-to-end production.
- Configurable design allows L, Inline and Simplex system configurations that fit your space.
- Receive unparalleled technical, field and business support from production experts who understand your real-world needs.



# Invigorate your business with a **new economic model. Or two.**

Breaking new ground in premium applications, the RICOH Pro VC70000e joins our award-winning continuous feed inkjet portfolio. This highly-capable system is fully loaded with a suite of automation tools, a new Undercoater (UC8100) and the same cutting-edge features first introduced on the RICOH Pro VC70000. Ideal for businesses that produce high-end applications, such as photo books and luxury brand catalogs — which require solid fills and sharp text on premium papers — the RICOH Pro VC70000e is here to help you take on the increasing demand for short runs and variable applications across a broader range of media, including plain, bulky and gloss.

Meanwhile, the RICOH Pro VC70000 remains a top performer for commercial and high-quality, data-driven transactional printers. Its ability to produce vibrant, price competitive, high ink coverage jobs at 492 ft. per minute on offset coated stock is a true differentiator. This system is field upgradeable, allowing you to scale production and tap into Ricoh's proprietary pre-coating technology as a business strategy. With the ability to pivot if paper shortages should stand in the way, you can confidently say yes to new work.



RICOH Pro VC70000e with unwinder and undercoater

# Meeting precise application requirements and exceeding customer expectations **just got easier.**

## Keep your operations moving at the speed of innovation.

The Ricoh offering of professional services can give you the instant expertise and the support you need to expand into high-growth applications. You'll watch our industry pros become fully immersed in everything from your day-to-day operations to technical challenges and your strategic goals.



Luxury Catalogs



Photo Books



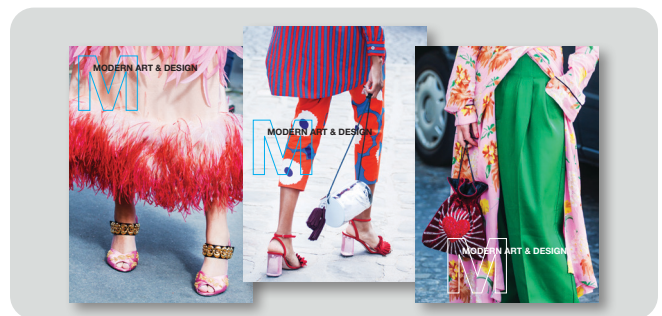
On-demand Publishing



Personalized Marketing



Loyalty Programs



Post Cards and Promotions

By delivering high value, innovative applications and flexible, revenue-generating programs for your clients, your most impressive output will be your growth.



# Catapult your success with unprecedented flexibility.

## At home in any environment.

The scalable RICOH Pro VC70000 Series excels in the most demanding commercial print spaces. Its configurable design and superior digital capabilities will fit your floor plan and your business plans. Reallocate offset work, take on shorter runs and eliminate costly setup processes to realize a better business model. Or, consolidate work from multiple toner devices to deliver superior products with tighter turnarounds for greater efficiency and profitability.

No matter which path your business is on, the combination of speed, 1200 × 1200 dpi image resolution and the RICOH TotalFlow® Print Server R600A Digital Front End — which accepts a wide range of native data streams without needing transforms that affect file fidelity — will get you there faster.





RICOH Pro VC70000e with unwinder, undercoater and rewinder

## Simplify business decisions.

With a suite of future-ready tools, you spend less time training staff and more time producing high-quality work that generates high profits. RICOH TotalFlow Advisor\* checks system status, logs maintenance records and proactively initiates service requests. Remote access logs reduce on-site visits and allow for advanced parts ordering. With RICOH Supervisor\*, you get organization-wide visibility through custom dashboards. Eliminate manual data entry and gain insights into device utilization to uncover operator issues based on printer performance per shift.

## Extended color. Advanced drying. Higher coverage.

Ricoh's exclusive extended-gamut pigment inks contain a higher pigment-to-water ratio. They deliver superior adhesion and let you produce more colors consistently. Coupled with internal anti-cocking and advanced drying technologies, the RICOH Pro VC70000 Series lets you produce higher ink coverage jobs with variable data, even on lighter stocks. Plus, with dynamic technology at the pel level, fine details and consistent half-tones meet client expectations, while ink usage is optimized.

\* The RICOH Automation Suite includes the RICOH Pro Scanner, RICOH TotalFlow Advisor and RICOH Supervisor and comes standard on the RICOH Pro VC70000e. Individual options can be added to the RICOH Pro VC70000.

## Automation, AI and you.

Embrace automation and harness the power of AI to reduce reliance on highly skilled, hard-to-find operators. By pre-programming make-ready tasks with the Smart Start features of the RICOH Pro Scanner\*, you redefine workflow efficiency. Schedule print head cleaning and quality control to run unattended, and watch your ROI begin before the next shift even arrives. And, with an AI-powered closed-loop web inspection system, the press actually learns as it goes, providing predictive analytics to ensure continual improvement.

## RICOH Undercoater, the ultimate overachiever.

The RICOH Undercoater (UC8100) can do more than lead you into the world of luxury application printing. Selectively engaged undercoating expands paper stock choices and increases print quality. It gives you competitive advantages with unique pricing models thanks to hybrid operations. The technology speeds up ink set, which minimizes bleed on gloss stocks and virtually eliminates mottling on coated stocks. On plain paper, it increases vibrancy and offers richer solids. This improves line sharpness and optical density for consistent color throughout the run.

For more information, or to connect with sales, visit:  
**[takealookatricohproduction.com/future](https://takealookatricohproduction.com/future)**

# RICOH Pro VC70000/Pro VC70000e

## SYSTEM SPECIFICATIONS

### Imaging Technology

Piezo Drop on Demand  
Dynamic Variable Drop Size – @ 2 bits/drop  
Stochastic Screening  
Ricoh Printheads – 10 printheads per color

### Engine Technology

Color Inkjet 4 colors CMYK  
Paper Path Tight Web  
Web Width Web Width 20.5" (520.7 mm)  
Printable Area – 20.5" (520.7 mm)  
4" to 54" (101.6 to 1371.6 mm)  
Paper Length  
Machine Layout – Duplex \*L\* or inline configuration  
(Simplex configuration available)

### Engine Components

Base Unit  
Dimensions (WxDxH) 168.9" (4290.5 mm) x 97.6"  
(2478 mm) x 78.74" (2000 mm)  
Weight 9321.1 lb (4228 kg)

### Operating Environment

Temperature 64.4 – 75.2° F (18 – 24° C)  
(recommended)  
Humidity 40 – 60%  
(recommended)

### Productivity

Resolution/Print Speed 600 x 600 dpi: 492 feet/min\*, or  
150 meters/min  
600 x 600 dpi: 394 feet/min, or  
120 meters/min  
1200 x 600 dpi: 246 feet/min and 328  
feet/min, or 75 and 100 meters/min  
1200 x 1200 dpi: 164 feet/min, or  
50 meters/min  
\*max paper weight printing at  
492 feet/min is 157gsm

### Inspection and Automation

RICOH Pro Scanner Option

#### Smart Start Feature

Automates print head cleaning and press make ready

#### Record and Replay

Images of last 30 minutes of print production

#### Printer Oriented Graphics

Control for automated density verification, registration detection  
and jet out detection

#### 2D Datamatrix Code Reading / Grading

#### Optional Features

OCR / MICR Verification and Grading  
1D / 2D Postal Code Verification and Grading  
User Oriented Graphics Control and Inspection  
Full Page Image Verification  
Label Verification  
Archiving Options

### Optional Undercoater Unit UC8100

Supports offset coated to 120m/m and uncoated to 150m/m

### Media Support

Media Types Plain, General Offset Coated\* and  
Uncoated, IJ coated, IJ treated, Ground-  
Wood, Recycled  
Paper Weight 40 gsm to 250 gsm

### Supplies

Pro Ink Cartridge Black VC60000 Type D  
Pro Ink Cartridge Cyan VC60000 Type D  
Pro Ink Cartridge Magenta VC60000 Type D  
Pro Ink Cartridge Yellow VC60000 Type D  
Pro Undercoat 200L VC60000 Type D

### Finishing

Specification 3rd party finishing devices I/F  
specification: Type 1A/+  
Finishing Solutions Multiple partners provide a variety of  
unwind, rewind, cut, fold, dynamic  
perforation, vision systems and  
inline processing, including a solution  
for books

### RICOH TotalFlow R600A Digital Front End

#### Architecture

Processor Architecture Intel Xeon x64  
OS Linux

#### Physical Characteristics

Dimensions (WxDxH) 39.5" (1003 mm) x 24" (609 mm) x  
49" (1245 mm)  
Weight 716.5 lb (325 kg)

#### Data Stream Support

PostScript  
PDF (APPE)  
PDF/VT  
IPDS

#### Job Submission

FTP  
SFTP  
IPP  
LPR  
Raw Port  
Operator Console  
Virtual Printer/Hot Folder Support

### Graphical User Interface

Display on each print engine  
Login by role: Admin, Operator, Maintenance or Customizable  
Highly customizable user interface layout by role  
Graphical Printer & Supplies Status  
Operator Messages  
Paper Catalog/Paper Setup

### Job Management

Graphical Job Ticketing/Job Preview – Native JDF

Banner  
Operator Comments  
Sides Printed  
Copies  
Rotate, Reduce/Enlarge, Image Alignment  
Special Marks

#### Job Imposition

#### Job Queue Management

Submit  
Suspend  
Hold  
Process Next  
Delete Job

#### View Jobs

Job Status  
Active  
Inactive  
Stored  
All Jobs  
Job History

### Color Management

ICC Profile Support  
Enhanced Color Management by Side and Object Type  
Device Link Support  
Spot Color Dictionaries (Pantone, Toyo, DIC, and HKS)  
CMR Support (AFP/IPDS)

### Software Support

RICOH ProcessDirector™ for AIX, Linux or Windows  
Version 3.7 or later releases

RICOH TotalFlow® BatchBuilder for Windows  
Version 2.3

RICOH TotalFlow® Advisor  
Version 1.4

RICOH Supervisor™

RICOH InfoPrint Manager for AIX, Linux, Windows  
Version 4.8 or later releases

Print Services Facility for AIX, Linux or Windows  
Version 3.1 or later releases

**RICOH**  
imagine. change.

www.ricoh-usa.com



Ricoh USA, Inc., 300 Eagleview Blvd, Exton, PA 19341, 1-800-63-RICOH  
©2022 Ricoh USA, Inc. All rights reserved. Ricoh® and the Ricoh logo are registered trademarks of Ricoh Company, Ltd. All other trademarks are the property of their respective owners.  
The content of this document, and the appearance, features and specifications of Ricoh products and services are subject to change from time to time without notice. Products are shown with optional features. While care has been taken to ensure the accuracy of this information, Ricoh makes no representation or warranties about the accuracy, completeness or adequacy of the information contained herein, and shall not be liable for any errors or omissions in these materials. Actual results will vary depending upon use of the products and services, and the conditions and factors affecting performance. The only warranties for Ricoh products and services are as set forth in the express warranty statements accompanying them.

R4013-4