

Ricoh PJ WX4130/PJ WX4130N
Business Projection Systems
A closer look at ultimate performance

RICOH

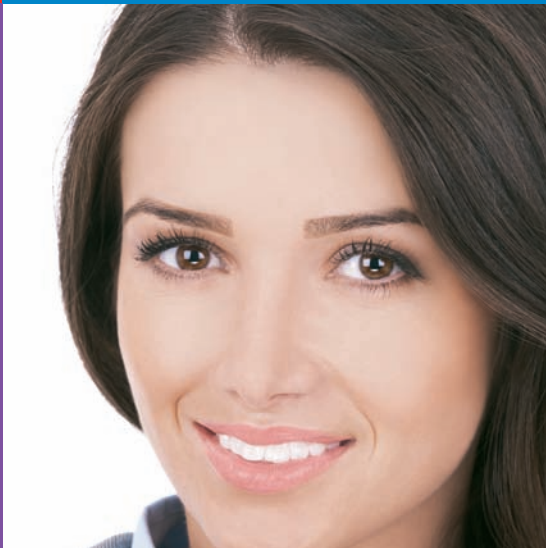
versatile



convenient



captivating



Ricoh PJ WX4130/PJ WX4130N

Short-throw projection with far-reaching results. The compact, easy-to-transport RICOH® PJ WX4130/PJ WX4130N offers a breakthrough in short-throw business projection systems. With its sleek, light-weight design, it can deliver full-size, high-quality image projection even when placed within inches from the wall. This ultra-short-throw projection system makes it easy to conduct meetings almost anywhere at any time. As a result, it is a valuable addition to Ricoh's Managed Document Services (MDS) portfolio of products and solutions designed to meet all of your print and communication needs.

The portable PJ WX4130/PJ WX4130N projection system is specifically engineered with an innovative upright design for easy placement within inches from a screen or wall to deliver shadow-free image projection in even the most space-restricted environments.



ProjectSharePresentEnvision

Built to Innovate

The PJ WX4130/PJ WX4130N offers superior image clarity and versatility at an affordable price to meet the precise requirements in smaller classroom or business settings.

- Showcase your message in any room with ultra-short-throw projection that emits sharp, brilliant images accurately at 48" to 80" display size when positioned within a few inches from the wall.
- Enhance the user experience with a minimum brightness rating of at least 2,500 lumens with 1280 x 800 WXGA resolution—without noise, glare or shadows that can detract from your presentation.
- Turn any standard whiteboard or smooth surface into an interactive showcase where the presenter can use markers or a stylus to enhance the presentation.
- Project and view 3D images with the unique DLP Link Technology using the optional 3D glasses for current and future applications.
- Produce crystal-clear audio via 2-watt, built-in speakers that accommodate the smallest of rooms to larger corporate, classroom, tradeshow and retail environments.
- Mute the sound or freeze the action to highlight specific moments in your presentation for seamless interactive audience participation.

Easy to Use

With its lightweight design that's easy to transport, the PJ WX4130/PJ WX4130N simplifies on-the-go presentations when conference rooms are limited.

- Move effortlessly from room to room with a compact system that can be transported easily by hand. A permanent mount is not necessary.
- Begin presenting immediately. Tabletop installation requires no elaborate set up, so users can simply set it down, plug it in and start the show.
- Ensure optimal clarity with Automatic Keystone Image Adjustment. The device corrects image distortion automatically when the projector is placed on an angle for properly squared images.
- Project presentations with the best possible image quality using the Auto Set feature. This feature automatically adjusts for flickering and positioning so you deliver the best possible presentation while on the go or in small meeting spaces.
- Protect the integrity of your presentations and limit user access by setting passwords and eliminate inadvertent mistakes during presentations by activating the Key Lock function.
- Gain peace of mind with long-lasting lamp life—up to 3,000 hours of brilliant images and performance.

Connect for Optimal Performance

Streamline how you manage content and enhance the impact of your presentations with feature-rich capabilities that are integrated seamlessly with your network.

- Take your presentation wherever you go. Save files to a USB memory drive and plug it into the USB terminal port for computer-free presentations. Users can also project images stored on USB-compliant devices—including digital cameras—directly to the screen using the USB terminal port.
- Use the convenient LAN connection to display movies in high-definition or to control a networked computer for shared-use projectors (PJ WX4130N only). Presenters can also take advantage of a closed captioning feature to reinforce their message.
- Maximize communication and display the same image at once to multiple projectors (up to four projectors) for all participants to see (PJ WX4130N only).
- PJLink compatibility lets users manage settings or turn the power on or off remotely—even other brands of network projectors—from your networked computer (PJ WX4130N only).
- Access and print projector status and error reports from your desktop using Ricoh's @Remote Intelligent Management Service.



As the ultimate short-throw projection system, the PJ WX4130/PJ WX4130N can be placed within about five inches from the wall for unobstructed presentations with rich colors, crisp lines and incredible resolution.



Create a virtual meeting room by synchronizing a presentation directly with multiple Apple® iPad® tablet devices using a standard Wi-Fi connection and the Ricoh TAMAGO Presenter application.

Improving User Environment

RICOH's proven optical technology increases devices' illuminant efficiency (brighter screen with the same light source), making a smaller footprint possible. This improves the User Environment in green (energy and resource saving) as well as usability (noise and heat reduction) aspects.



Ricoh PJ WX4130/PJ WX4130N

System Specifications

Model	PJ WX4130		PJ WX4130N	
Projector Part Number	431067		431069	
Replacement Lamp Part Number	308942		308942	
3D Glasses Type 1*1	308884		308884	
System	Single chip DLP® system			
Projection Method	Ultra short-focus lens/mirror projection			
Resolution	WXGA – 1280 x 800 dpi (1,024,000 Picture Elements)			
Liquid Crystal Panel	Size	0.65"		
	Aspect Ratio	16:10		
White Light Output (brightness)*2	2,500 lm			
Color Reproduction	16.77 million colors			
Contrast Ratio	2500:1			
Size of Projected Image	48" – 80"			
Projection Distance (from rear of unit to projection surface)	4.6" to 9.8"			
Lamp Type	High-pressure mercury (Standard Mode: 225W; Economy Mode: 170W)			
Lamp Life	Standard Mode: 3,000 hours; Economy Mode: 4,000 hours			
RGB Compatible Signals (analog, digital)	Real Display	WXGA (1280 x 800), XGA (1024 x 768), SVGA (800 x 600 only), VGA (640 x 480), HDMI		
	Compressed Representation	UXGA (1600 x 1200), SXGA (1280 x 1024)		
Input Signals	NTSC, PAL, SECAM, NTSC4, 43, PAL-M, PAL-N, PAL-60; Component Image (480ip, 576ip, 1080ip)			
Analog RGB Compatible Scanning Frequency*2	Horizontal	15 to 100 kHz		
	Vertical	23 to 85 Hz		
USB Memory Compatible File Format*3	N/A		Still Image: JPEG Moving Image: MPEG2	
Projection Lens	Zoom Ratio	80% - 100%		
	Magnify	100%, 125%, 150%, 175%, 200%		
	Zoom	Digital		
	Focus	Manual		
Interface	Image Input	Mini D-sub 15 pin x 1, HDMI x 1, RCA pin x 1		
	Audio Input	3.5 mm diameter stereo mini pin jack x 1		
	RS232C	USB-Type-minB x 1		
	USB	N/A	USB 2.0 High-Speed Type A x 1	
	Wired LAN	N/A	10/100/1000Base-TX Ethernet x 1 (RJ-45)	
	Wireless LAN	N/A	IEEE 802.11a/b/g/n compliant*4, Ad Hoc + Infrastructure mode support, WPA/WPA2 Authentication, WEP/TKIP/AES Encryption	
Supported OS	Network Utility	N/A	Windows XP SP3 or later (Home/Professional), Vista SP2 or later (Ultimate/Business/Home Premium/Home Basic)*5, 7 (Ultimate/Enterprise/Professional Home Premium)*5	
	JPEG Conversion Utility	N/A	Windows XP SP3 or later (Home/Professional), Vista SP2 or later (Ultimate/Business/Home Premium/Home Basic)*5, 7 (Ultimate/Enterprise/Professional Home Premium)*5	
	Projector Management Utility	N/A	Windows XP SP3 or later (Home/Professional), Vista SP2 or later (Ultimate/Business/Home Premium/Home Basic)*6, 7 (Ultimate/Enterprise/Professional Home Premium)*6	
Primary Features	3D (DLP Link), Auto Keystone, Blackboard Mode, Carbon Meter, Closed Captioning, Economy Mode, Freeze, Key Lock, Mute (Blank Screen), Password Protection, Resize (Magnify), User Logo		@Remote (limited support), 3D (DLP Link), Blackboard Mode, Carbon Meter, Closed Captioning, Economy Mode, Freeze, Key Lock, Auto Keystone, Mute (Blank Screen), Password Protection, Resize (Magnify), User Logo, Digital Camera Projection (requires USB connection; JPEG only)	
Network Features	N/A		Network Projection (requires Network Utility), Projection Server (requires JPEG Conversion Utility), Projector Management (requires Projector Management Utility or @Remote), Multi-screen Projection (requires LAN connection), Mouse Remote Receiver, PJ Link, Slide Show Mode	
Software Utilities	N/A		Network Utility, JPEG Conversion Utility, Projector Management Utility	
Built-in Speaker	2W Mono			
Dimensions (W x D x H) (Including protrusions)	10.1" x 5.6" x 8.7" (257 x 144 x 221 mm)			
Weight	Approx. 6.6 lb. (3.0 kg)			
Power Consumption	While Operating	Standard Mode: 291 W or less; Economy Mode: 222 W or less		Standard Mode: 300 W or less; Economy Mode: 228 W or less
	Standby	Regular Standby Mode: 0.17 W or less		Network Standby Mode: 0.46 W or less*7
Operating Environment	While Operating	Ambient temperature: 5 to 35 degrees Celsius; Humidity: 30 to 70% (no condensation)		
Fan Noise	Standard Mode: 38 dB; Low Power Mode: 32 dB			
Power	100 V - 240 V, 50/60 Hz			
Accessories Packaged with Projector	Cables	RGB cable (3m), 3-pin power cable (3m)		
	CD-ROM	User's Manual	User's Manual, Network Utility Type A, JPEG Conversion Tool Type A, Projector Management Utility	
	Carrying Case (W x D x H)	Exterior Size: 13.2" x 6.0" x 9.0" (335 x 152 x 229 mm)		
	Remote Control	Wireless Remote Control		Wireless Remote Control; Mouse Remote Receiver

1: Native support for Frame Sequential 3D format. Other sources may require a converter that is not provided from Ricoh.

2: Preset to this range of supported signals. Signals that are not preset may not display even if they are within this range.

3: When using the USB terminal for computer-free presentations, there is no guarantee the images will display. They may not display because of the file.

4: The 5.0G Hz band is not supported in the case of IEEE 802.11a/n ad hoc communication. 5: 32-bit/64-bit Operating Systems supported. 6: Not supported on 64-bit Operating Systems. 7: Only in case of wired LAN connection.

Warranty: The Ricoh PJ WX4130/PJ WX4130N is under warranty against defects for a period of three years from the date of purchase. Consumables are under warranty for a period of 90 days from the date of purchase or until depleted, whichever comes first. Please refer to warranty documents shipped with the product for more details.

For maximum performance, we recommend using genuine Ricoh parts and consumables.

RICOH

www.ricoh-usa.com

Ricoh Americas Corporation, Five Dedrick Place, West Caldwell, NJ 07006

Ricoh® and the Ricoh Logo are registered trademarks of Ricoh Company, Ltd. All other trademarks are the property of their respective owners. The content of this document, and the appearance, features and specifications of Ricoh products and services are subject to change from time to time without notice. Products are shown with optional features. While care has been taken to ensure the accuracy of this information, Ricoh makes no representation or warranties about the accuracy, completeness or adequacy of the information contained herein, and shall not be liable for any errors or omissions in these materials. Actual results will vary depending upon use of the products and services, and the conditions and factors affecting performance. The only warranties for Ricoh products and services are as set forth in the express warranty statements accompanying them.

R3317

